

## REQUEST FOR QUOTATION (RFQ)

RFQ Reference: 4200533171

Date: 07 September 2023

**SECTION 1: REQUEST FOR QUOTATION (RFQ) for the provision of Rehabilitation of TVET Center In Sabha**  
International Organisation for Migration (IOM) kindly requests your quotation for the provision of goods, works and/or services as detailed in Annex 1 of this RFQ.

This Request for Quotation comprises the following documents:

Section 1: This request letter

Section 2: RFQ Instructions and Data

Annex 1: Schedule of Requirements

Annex 2: Quotation Submission Form

Annex 3: Technical and Financial Offer

When preparing your quotation, please be guided by the RFQ Instructions and Data. Please note that quotations must be submitted using **Annex 2: Quotation Submission Form and Annex 3 Technical and Financial Offer**, by the method and by the date and time indicated. It is your responsibility to ensure that your quotation is submitted on or before the deadline. Quotations received after the submission deadline, for whatever reason, will not be considered for evaluation.

**Mandatory Site Visit on: 17 Sep 2023 at 09:00 AM. The site visit is mandatory and failure to attend will lead to automatic disqualification of the bidders.**

For disqualification and for any technical queries, please get in touch with Engineers:

1- Eng. Hussin Taher, Phone: 092-5143348

2- Eng. Alnaas Mohame, Phone: 092-5750059

Thank you and we look forward to receiving your quotations.

IOM Libya Procurement

## SECTION 2: RFQ INSTRUCTIONS AND DATA

<b>Deadline for the Submission of Quotation</b>	<b>30-Sep-2023</b> If any doubt exists as to the time zone in which the quotation should be submitted, refer to <a href="http://www.timeanddate.com/worldclock/">http://www.timeanddate.com/worldclock/</a> .
<b>Method of Submission</b>	<p>Quotations must be submitted as follows:</p> <p><input type="checkbox"/> E-tendering</p> <p><input checked="" type="checkbox"/> Email</p> <p><input type="checkbox"/> Courier / Hand delivery</p> <p><input type="checkbox"/> Other <a href="#">Click or tap here to enter text.</a></p> <p>Bid submission address: <b>iomlibyaproposal@iom.int</b></p> <ul style="list-style-type: none"> <li>File Format: PDF</li> <li>File names must be maximum 60 characters long and must not contain any letter or special character other than from Latin alphabet/keyboard.</li> <li>All files must be free of viruses and not corrupted.</li> <li>Max. File Size per transmission: 25 MB</li> <li>Mandatory subject of email: <b>RFQ 4200533171</b>, Company name</li> <li>Multiple emails must be clearly identified by indicating in the subject line "email no. X of Y", and the final "email no. Y of Y".</li> <li>It is recommended that the entire Quotation be consolidated into as few attachments as possible.</li> <li>The proposer should receive an email acknowledging email receipt.</li> </ul>
<b>Cost of preparation of quotation</b>	IOM shall not be responsible for any costs associated with a Supplier's preparation and submission of a quotation, regardless of the outcome or the manner of conducting the selection process.
<b>Supplier Code of Conduct</b>	All prospective suppliers must read the UN Supplier Code of Conduct and acknowledge that it provides the minimum standards expected of suppliers to the UN. The Code of Conduct, which includes principles on labour, human rights, environment and ethical conduct may be found at: <a href="http://ungm.org">Supplier Code of Conduct (ungm.org)</a> .
<b>Conflict of Interest</b>	UN encourages every prospective Supplier to avoid and prevent conflicts of interest, by disclosing to UN if you, or any of your affiliates or personnel, were involved in the preparation of the requirements, design, specifications, cost estimates, and other information used in this RFQ.
<b>General Conditions of Contract</b>	Any Purchase Order or contract that will be issued as a result of this RFQ shall be subject to the IOM General Conditions of Contract for provision of goods/services/transportation/medical services available at <a href="https://www.iom.int/do-business-us-procurement">https://www.iom.int/do-business-us-procurement</a> .
<b>Eligibility</b>	Bidders shall have the legal capacity to enter into a binding contract with IOM and to deliver in the country, or through an authorized representative.
<b>Currency of Quotation</b>	Quotations shall be quoted in <b>US Dollar</b>
<b>Duties and taxes</b>	<p>The International Organization for Migration is exempt from all direct taxes, except charges for public utility services, and is exempt from customs restrictions, duties, and charges of a similar nature in respect of articles imported or exported for its official use. All quotations shall be submitted net of any direct taxes and any other taxes and duties, unless otherwise specified below:</p> <p>All prices shall:</p> <p><input type="checkbox"/> be inclusive of VAT and other applicable indirect taxes</p> <p><input checked="" type="checkbox"/> be exclusive of VAT and other applicable indirect taxes</p>
<b>Language of quotation and documentation including</b>	English

<b>catalogues, instructions, and operating manuals</b>	
<b>Documents to be submitted</b>	<p>Bidders shall include the following documents in their quotation:</p> <p><input checked="" type="checkbox"/> Annex 2: Quotation Submission Form duly completed and signed</p> <p><input checked="" type="checkbox"/> Annex 3: Technical and Financial Offer duly completed and signed and in accordance with the Schedule of Requirements in Annex 1</p> <p><input type="checkbox"/> Other <a href="#">Click or tap here to enter text.</a></p>
<b>Quotation validity period</b>	Quotations shall remain valid for <a href="#">Click or tap here to enter text.</a> days from the deadline for the Submission of Quotation.
<b>Price variation</b>	No price variation due to escalation, inflation, fluctuation in exchange rates, or any other market factors shall be accepted at any time during the validity of the quotation after the quotation has been received.
<b>Partial Quotes</b>	<p><input checked="" type="checkbox"/> Not permitted</p> <p><input type="checkbox"/> Permitted <a href="#">Insert conditions for partial quotes and ensure that the requirements are properly listed in lots to allow partial quotes</a></p>
<b>Payment Terms</b>	<p><input checked="" type="checkbox"/> 90% within 30 days after receipt of goods, works and/or services and submission of payment documentation. And 10% will be held as retention and paid after 12 Months of works completion date.</p> <p><input type="checkbox"/> Other <a href="#">Click or tap here to enter text.</a></p>
<b>Contact Person for correspondence, notifications and clarifications</b>	<p>Focal Person: <b>IOM LIBYA Procurement</b></p> <p>E-mail address: <a href="mailto:iomlibyaproposal@iom.int">iomlibyaproposal@iom.int</a></p>
<b>Clarifications</b>	Requests for clarification from bidders will <b>NOT</b> be accepted any later than 2 days before the submission deadline. Responses to request for clarification will be emailed to <a href="mailto:iomlibyaproposal@iom.int">iomlibyaproposal@iom.int</a> by 24 September 2023
<b>Evaluation method</b>	<p><input type="checkbox"/> The contract will be awarded to the lowest price substantially compliant offer</p> <p><input checked="" type="checkbox"/> Other Technical evaluation will be done on PASS /FAIL basis</p>
<b>Evaluation criteria</b>	<p><input checked="" type="checkbox"/> Full compliance with all requirements as specified in Annex 1</p> <p><input checked="" type="checkbox"/> Full acceptance of the General Conditions of Contract</p> <p><input type="checkbox"/> Comprehensiveness of after-sales services</p> <p><input checked="" type="checkbox"/> Earliest Delivery /shortest lead time</p> <p><input type="checkbox"/> Others</p>
<b>Right not to accept any quotation</b>	IOM is not bound to accept any quotation, nor award a contract or Purchase Order
<b>Right to vary requirement at time of award</b>	At the time of award of Contract or Purchase Order, IOM reserves the right to vary (increase or decrease) the quantity of services and/or goods, by up to a maximum 25% of the total offer, without any change in the unit price or other terms and conditions.
<b>Type of Contract to be awarded</b>	construction contract
<b>Expected date for contract award.</b>	22 October 2023
<b>Policies and procedures</b>	This RFQ is conducted in accordance with Policies and Procedures of IOM
<b>UNGM registration</b>	IOM is encouraging all suppliers to register at the United Nations Global Marketplace (UNGM) website at <a href="http://www.ungm.org">www.ungm.org</a> . The Bidder may still submit a quotation even if not registered with the UNGM, however, if the Bidder is selected for Contract award of USD 100,000 and above, the Bidder is recommended to register on the UNGM prior to contract signature. For vendors who do not have the technical means to register in UNGM, the UNGM has implemented an assisted vendor registration functionality that allows IOM procurement personnel to add local vendors to the UNGM.

## ANNEX 1: SCHEDULE OF REQUIREMENTS

### Technical Specifications for Works:

Item No	Minimum technical requirements	Qty	Unit
1.1.1	Demolition and removal of buildings from limestone or brick, including foundations and transport of waste to public dumps, accordance to the instructions of the supervising engineer.	15	M3
1.1.2	demolition and removing the external plaster for facades, and transferring the waste and preparing the place for new works, according to the technical specification and instructions of the supervising engineer	120	M2
1.1.3	Cracking and removing the concrete of the floor in any thickness and the price including cleaning the place and transfer of waste to the landfills in accordance with the instructions of the supervising engineer.	40	M3
1.1.4	Removal the aluminum windows and the metal windows protection, according to technical instructions and supervisor engineer.	9	No
1.1.5	Remove old electricity conduit of any size .	150	Lin.M
1.1.6	Cleaning the site through and after the implementation of the work and the price includes removing trees, weeds, bricks, stones, and everything necessary to finish the work, preparing the site for new works, and transferring the waste to public dumps, according to the instructions of the supervising engineer.	145	M3
<b>1.2</b>	<b>Civil works</b>		
1.2.1	Excavation of for foundations at any type of soil, rate including excavations for Ground Beams for and removal of surplus to the dump area as directed by Engineer.	20	M3
1.2.2	Backfilling up to under floors level & for foundations with approved quality compacted soil (not sand). from good surplus soil or supplied and free from the rubbish in accordance of the technical specifications and Engineer's instructions.	800	M3
1.2.3	Supply and cast plain concrete C 20 under the bases, with thickness 10 cm according to the drawings and supervising engineer instruction.	16	M2

1.2.4	Supply and cast reinforced concrete for foundation with stress thresholds break 25N/MM <sup>2</sup> and stress fracture 80kgm/m <sup>3</sup> according to drawings and technical instructions of supervising engineer.	5	M3
1.2.5	Supply and cast reinforced concrete for Ground beam with stress thresholds break 30N/MM <sup>2</sup> and stress fracture 115kgm/m <sup>3</sup> according to drawings and technical instructions of supervising engineer.	5.5	M3
1.2.6	Supplying and pouring reinforced concrete for columns, thresholds, and upper walls with a breaking stress of 30 N/mm <sup>2</sup> , and 115 kg/m <sup>3</sup> of reinforcing steel, according to the maps, drawings, and the instructions of the supervising engineer.	5	M3
1.2.7	Supply and work of concrete roads courses size 35 × 15 × 10 cm, the work of concrete mattress and fixing from the back with concrete and flesh separators bridges cement mortar according to technical regulations and instructions of the supervising engineer.	481	Lin.M
1.2.8	Supply and cast plain concrete 25N/MM <sup>2</sup> , thickness 15 cm for sidewalks and yard floors, and foundation according to the specification and engineer instructions.	942	M2
1.2.9	Excavation and casting of the concrete for a ground tank with a capacity of 10 M3 (forming system with a thickness of 10 cm) The work includes casting the floor and the cover and installing a manhole for maintenance. according to instructions of the supervising engineer.	1	No
1.2.10	Supply and construction of hollow concrete brick walls 20 cm thickness cement mortar (3: 1) consisting of 440 kg cement + 1 m <sup>3</sup> sand, according to the instructions of the supervising engineer.	180	M2
1.2.11	Supply and work plaster for the inside walls and ceilings with cement mortar. (3: 1) Consists of 440 kg cement + 1 m <sup>3</sup> , according to the technical rules and instructions of the supervising engineer.	520	M2
1.2.12	Supply and work plaster for the walls and external facades of two layers, the first with a thickness of 15 mm and a mixture (1: 3) and the second layer of 350 kg cement + 580 kg limestone powder + 1170 kg sand + marble powder + pigments in the desired color, according to the instructions of the supervising engineer.	210	M2
<b>1.3</b>	<b>Painting Works</b>		

1.3.1	Supply and work for interior walls and ceilings with a normal preparatory face, and two sides of the emulsion of paint white plastic, and the price includes the rubbing of old paint, and put the necessary paste according to technical principles and instructions of the supervising engineer.	1820	M2
1.3.2	Supply and work of interior wall paint with a preparatory face of oil and two sides of matte oil paint, according to the sample, color and the approved texture, according to the technical regulations and instructions of the supervising engineer.	950	M2
1.3.3	Supply and implementation of graphite works for exterior facades and entrances, according to the color and texture sample approved by the supervising engineer.	1390	M2
1.3.4	Supplying and making an insulating layer of hot bitumen to paint the bases, screeds and column, accordance with the technical principles and the instructions of the supervising engineer.	100	M2
1.4	<b>Floors and walls tiles works</b>		
1.4.1	Supply and installation of ceramic tiles for floors Spanish anti-slip first class according to specifications and technical assets and the adoption of the sample from the supervising engineer.	492	M2
1.4.2	Supply and installation of colored faience tiles for the walls for buffet from first-class Spanish, in the required size and color, with the approval of the sample from the supervising engineer. according to technical principles.	26	M2
1.4.3	Supply and installation of a granite marble table for buffet, (70 cm wide, 3 cm thick, and 95 cm high), with ornaments and everything necessary to complete the work according to technical principles and the engineer's instructions.	3	Lin.m
1.4.4	Supply and installation of 3 cm thick marble for windows, doors frames, and stairs. The price includes making ornaments from Selvia type, according to the required dimensions, technical assets and the instructions of the supervising engineer.	172	M2
1.4.5	Supplying and installing a 10 cm wide ceramic skirt, in accordance to the technical principles and the instructions of the supervising engineer.	216	Lin.m
1.4.6	Supplying and work a waterproofing layer of bitumen material (roll) according to the approved sample for roofs with a thickness of 4 mm, with skirting of no less than 15 cm the price includes making a layer of regular concrete with a thickness of 5 cm (without a corresponding premium) accordance to the technical specifications, and the instructions of the supervising engineer.	725	M2
1.5	<b>Doors, Windows and Metal works</b>		

1.5.1	Supplying and installing doors made of mahogany wood, consisting of one or two leaves, including hardware, handles, frames and paints from an approved sample, and everything necessary to complete the work according to the technical principles and the instructions of the supervising engineer.	6	M2
1.5.2	Supply and installation of steel protection doors (laser blacksmith) thickness of 4 mm according to the approved sample and price including packaging with plastic plates, hardware, locks, paints and all necessary for the completion of the work accordance to the technical regulations and instructions of the supervising engineer.	35	M2
1.5.3	Supply and installation of protective iron (laser blacksmithing) thickness of 4 mm for the windows according to the sample and the approved form, the price including frame and paints and all that is necessary to do the work according to the technical principles and instructions of the supervising engineer	54	M2
1.5.4	Supply and installation of a Metal Shade with a sandwich roof. according to engineer and the following technical specifications:• The main beams should be (I-beams) with a width of 20 cm, all columns should be connected by these beams in both directions (X,Y).• The sub-beams (C-beams). The distance between sub-beams less than 1m in the longitudinal direction.• The roof of the sandwich is 10 cm thick.• All steel members as beams & bolts should be galvanized.	58	M2
1.5.5	Supplying and installing PVC windows wooden color, according to the approved sample. The price includes all that is necessary for the work to complete, accordance to the technical principles and instructions of the supervising engineer.	54	M2
1.5.6	Supplying and installing PVC Doors wooden color, according to the approved sample. The price includes all that is necessary for the work to complete, accordance to the technical principles and instructions of the supervising engineer.	4.4	M2
1.5.7	Supply and installation of suspended ceiling from aluminum panels (60x60) cm, as approved sample and according to technical specifications and engineer instructions.	512	M2
1.5.8	Supplying and installation of a gypsum board walls with a thickness of 10 cm with all necessary works according to the design and instructions of the supervising engineer.	24	M2
1.5.9	Supply and implementation of landscaping of ready-made grass type Basbelm and the item includes the preparation of soil and leveling and compacting before and after planting, irrigation and supplementary fertilizer and care as prescribed by the supervising authority.	370	M2
<b>1.6</b>	<b>Water and Sanitation works</b>		

1.6.1	Supply and installation of 2 " P.P.R pipes, including fittings, and all necessary work in accordance with the technical specifications and instructions of the supervising engineer.	3	Lin.m
1.6.2	Supply and installation of 1 " P.P.R pipes, including fittings, and all necessary work in accordance with the technical specifications and instructions of the supervising engineer.	100	Lin.m
1.6.3	Supply and installation of 3/4 " P.P.R pipes, including fittings, and all necessary work in accordance with the technical specifications and instructions of the supervising engineer.	15	Lin.m
1.6.4	Supply and installation of P.P.R pipes with a diameter of 0.5 inches including the connections and necessary for the completion of work in accordance with the technical specifications and instructions of the supervising engineer.	12	Lin.m
1.6.5	Supply and installation of ground siphon of excellent type, including the cover to be of iron coated with chromium and two layers of size not less than 15 × 15 cm, for bathrooms, and all necessary to finish the work as required, according to technical specifications and instructions of the supervising engineer .	1	No
1.6.6	Supply and installation of 1.5-inch P.V.C pipes and pressure of 10 bar, including all necessary for the completion of work, for the need for sewage drainage line, and in accordance with technical specifications and instructions of the supervising engineer .	6	Lin.m
1.6.7	Supply and installation of pipes made of P.V.C with a diameter of 6 inches and a pressure of 10 bar, for the need to drainage sewage, and the price including the connections and everything necessary for the completion of work, according to technical specifications and instructions of the supervising engineer.	18	Lin.m
1.6.8	Supply and work of a complete inspection room, measuring 80 × 80 cm, and the evaluation of a depth of 1 meter of cast iron weighing not less than 70 kg, according to the technical specifications and instructions of the supervising engineer.	2	No
1.6.9	Supply and installation of water locking valves for P.P.R pipes with diameters 1/2, 3/4, 1,2 inch, according to the approved sample, technical procedures and the instructions of the engineer.	5	No
1.6.10	Supply and installation of an Italian electrical water heater with a capacity of at least 50 liters of an excellent type, including switch and connections and what is necessary for the work, according to the approved sample and in accordance with the "technical principles and instructions of the supervising engineer.	1	No

1.6.11	Supplying and installing an excellent steel wash basin, including mixer and siphon, and everything needed to complete the work as required, according to the approved sample, in accordance with the technical specifications and the instructions of the supervising engineer.	1	No
1.6.12	Supply and installation of a water tank capacity of 1 cubic meters of P.V.C material including mechanical buoy and all necessary for the completion of work in accordance with the technical regulations and instructions of the supervising engineer.	1	No
1.6.13	Supply and installation of water pump power 1 hp excellent type, from a certified sample installed in accordance with technical regulations and instructions of the supervising engineer.	1	No
1.6.14	Supply and installation of water pump power 1/2 hp excellent type, from a certified sample installed in accordance with technical regulations and instructions of the supervising engineer.	1	No
1.6.15	Supply and implementation of a fixed irrigation network to cover all the green area consisting of polyethylene pipes according to the required diameters in full accessories with control switches and self-propelled sprinklers from the bottom to up and vice versa and watered according to the required angle according to the approved quality.	370	M2
<b>1.7</b>	<b>Electrical works</b>		
1.7.1	Supply and install copper electrical wires section 2.5mm <sup>2</sup> insulated PVC PV 750 volts according to international specifications with the removal of old and assembled on site, accordance with technical specifications and instructions of the supervising engineer.	1800	Lin.m
1.7.2	Supply and install copper electrical wires section 4mm <sup>2</sup> insulated PVC PV 750 volts according to international specifications with the removal of old and assembled on site, accordance with technical specifications and instructions of the supervising engineer.	2760	Lin.m
1.7.3	Supply and install copper electrical wires section 6mm <sup>2</sup> insulated PVC PV 750 volts according to international specifications with the removal of old and assembled on site, accordance with technical specifications and instructions of the supervising engineer.	1200	Lin.m
1.7.4	Supply, install electrical cables 4x16 mm <sup>2</sup> made of copper insulated with a plastic compound with high insulation, such as polyvinyl chloride (PVC) or polyethylene (XLPE), voltage of 600/1000 volts. The price includes excavation, laying cable termination and connection.	85	Lin.m
1.7.5	Supply, install and test electrical cables 4x16 mm <sup>2</sup> made of copper insulated with a plastic compound with high insulation, such as polyvinyl chloride (PVC) or polyethylene (XLPE), voltage of 600/1000 volts. The price includes excavation, laying cable termination and connection.	111	Lin.m

1.7.6	Supply and installation of LED lighting fixture 120 watt (60 * 60 cm) of original European quality, according to the approved sample, and installed on the suspended ceiling according to the technical specifications and instructions of the supervising engineer.	58	No
1.7.7	Supply and installation of 400 watt LED headlamps from an approved sample, the price includes cables and switches and all that is necessary to complete the work in accordance with the technical principles and the instructions of the supervising engineer.	16	No
1.7.8	Supply and installation of original single internal switch first grade 16 amp to control the lighting units and the price including the installation of a power box P.V.C first class and everything necessary to work .	18	No
1.7.9	Supply and installation of double electrical socket outlet first class 16 amp including land Price including installation of a power box P.V.C first class and everything necessary to work .	74	No
1.7.10	Complete weather proof outdoor single socket outlet 2P+E, 16 A.	6	No
1.7.11	Supply and installation of a lighting circuit with a single switch including the extension of individual copper wires flexible insulated PVC PVC inside strong plastic pipes and buried inside the walls for three exits according to the technical principles and instructions of the supervising engineer .	18	No
1.7.12	Supply and installation of main wall distribution board with differential switch four poles 200 amp and price including brakers to feed lighting, and sockets .	1	No
1.7.13	Supply and installation of main wall distribution board with differential switch four poles 63 amp and price including brakers to feed lighting, and sockets .	3	No
1.7.14	Supply and installation of fire-extinguisher of 6 Kg weights, the work includes installation on wall.	16	EA
1.7.15	Supply and installation of air conditioners of 9000 BTU power inverter, including the switch, connection wires, and all necessary works, according to the approved sample and the instructions of the supervising engineer.	2	No
1.7.16	Supply and installation of air conditioners of 12000 BTU power inverter, including the switch, connection wires, and all necessary works, according to the approved sample and the instructions of the supervising engineer.	16	No

1.7.17	Supply and installation of ventilation fans 60 * 60 cm with excellent and approved quality. The item includes all connections and the operating switch according to the technical specifications and instructions of the supervising engineer.	3	No
<b>2</b>	<b>Construction of Toilets</b>		
<b>2.1</b>	<b>Excavation and backfilling works</b>		
2.1.1	Excavation of for foundations up to 1.2m deep in in any kind of soil, rate including removal of surplus to the dump area according to the instructions of the supervising engineer.	45	M3
2.1.2	Supply soil suitable for backfilling from outside the site for various backfilling purposes, brushing, leveling, and compacting it according to the technical principles and the instructions of the supervising engineer.	105	M3
<b>2.2</b>	<b>Concrete works</b>		
2.2.1	Supply and cast plain concrete C 20 under the bases, with thickness 10 cm according to the drawings and supervising engineer instruction.	103	M2
2.2.2	Supply and cast reinforced concrete for foundation with stress thresholds break 25N/MM <sup>2</sup> and stress fracture 80kgm/m <sup>3</sup> according to drawings and technical instructions of supervising engineer.	8	M3
2.2.3	Supply and cast reinforced concrete for Ground beam with stress thresholds break 30N/MM <sup>2</sup> and stress fracture 115kgm/m <sup>3</sup> according to drawings and technical instructions of supervising engineer.	7.5	M3
2.2.4	Supply and cast reinforced concrete for columns with stress thresholds break 30N/MM <sup>2</sup> and stress fracture 115kgm/m <sup>3</sup> according to the drawings technical instructions of supervising engineer.	4.8	M3
2.2.5	Supply and implement reinforced concrete for Ribbed Slabs (Hordi Roof Slab) with Clay Hollow Blocks (Ajori Bricks) with stress thresholds break 25N/MM <sup>2</sup> according to the technical specifications and drawings and instructions of the supervising engineer, and the price includes the upper concrete layer.	84	M2

2.2.6	Supply and install concrete curbstones size 35 × 15 × 25 cm, the work includes concrete slab and fixing from the back with concrete and filling the joints with cement mortar according to technical specification and instructions of the supervising engineer.	40	Lin.M
<b>2.3</b>	<b>Block WORKS</b>		
2.3.1	Supply & build hollow concrete blocks size 40x20x20cm, built with cement sand mortar (1:3) mix according to technical specification and instruction of Engineer.	270	M2
2.3.2	Supply & build hollow concrete blocks size 40x15x20cm, built with cement sand mortar (1:3) mix according to technical specification and instruction of Engineer.	71	M2
<b>2.4</b>	<b>Plastering works</b>		
2.4.1	Supply and make external plastering 25 mm thick. The work includes rough 15 mm primer rendering with cement sand mortar (1:3) mix and metal mesh at concrete block work joints, edges and openings, finishing 10 mm coat with 350 Kg cement+ 580 Kg limestone powder + 1170 Kg sand mix, .	336	M2
2.4.2	Supply and make internal plastering (15) mm thick for walls and ceiling with cement sand mortar (1:3) mix made of 440 Kg cement + 1 CU.M sand. The work includes rough 5 mm primer rendering, finishing coat 10 mm and metal mesh at concrete block work joints, edges and openings.	18	M2
<b>2.5</b>	<b>Painting works</b>		
2.5.1	Supply & paint Graffito for exterior , one under coat primer and The work include cleaning the surface and all required works.	336	M2
2.5.2	Supply and work for interior walls and ceilings with a normal preparatory face, and two sides of the emulsion of paint white plastic, and the price includes the rubbing of old paint, and put the necessary paste according to technical principles and instructions of the supervising engineer.	78	M2
2.5.3	Supply and work of interior wall paint with a preparatory face of oil and two sides of matte oil paint, according to the sample, color and the approved texture, according to the technical regulations and instructions of the supervision	18	M2

2.5.4	Supplying and making an insulating layer of hot bitumen to paint the bases, screeds and column , accordance with the technical principles and the instructions of the supervising engineer.	120	M2
<b>2.6</b>	<b>Floors and walls tiles works</b>		
2.6.1	Supply and installation of colored walls tiles grade A the sample to be approved. According to to technical specification and supervising engineer instructions.	107	M2
2.6.2	Supply and installation of Spanish floor ceramic tiles. The sample to be approved. According to technical specifications and supervising engineer instructions	70	M2
2.6.3	Supply and installation of cement tiles for roofs, thickness of 20 mm, and the price includes skirts of the same type of tiles with cement mortar consisting of 250 kg of cement, per cubic meter of sand, taking into account the inclinations towards the gutters, according to the technical principles and the instructions of the supervising engineer.	84	M2
2.6.4	Supply and installation of marble thickness of 3 cm to sit, from the Egyptian Silvia ornaments for windows and doors, according to the technical assets and instructions of the supervising engineer.	47	M2
<b>2.7</b>	<b>Metal works</b>		
2.7.1	Supply and installation of steel protection doors (laser blacksmith) thickness of 4 mm according to the approved sample and price including packaging with Sheets of fiber, hardware, locks, paints and all necessary for the completion of the work accordance to the technical regulations and instructions of the supervising engineer.	6	M2
2.7.2	Supply and installation of protective iron (laser blacksmithing) thickness of 4 mm for the windows according to the sample and the approved form, the price including frame and paints and all that is necessary to do the work according to the technical principles and instructions of the supervising engineer	4	M2
2.7.3	Supply and installation of P.V.C doors single leaf (white) including locks and hardware from an approved sample to be installed in accordance with the technical regulations and instructions of the supervising engineer.	22	M2
2.7.4	Supply and installation of P.V.C windows single leaf (white) including locks and hardware from an approved sample to be installed in accordance with the technical regulations and instructions of the supervising engineer.	4	M2

2.7.5	Supply and installation of suspended ceiling from aluminum panels (60x60) cm, as approved sample and according to technical specifications and engineer instructions.	62	M2
2.7.6	Supply and installation of guiding signs painted by golden color according to the approved sample.for the room entrances , according to the supervising engineer's instructions.	6	No
2.8	<b>Water and Sanitation works</b>		
2.8.1	Supply and installation of 1 " P.P.R pipes, including fittings, and all necessary work in accordance with the technical specifications and instructions of the supervising engineer.	60	Lin.m
2.8.2	Supply and installation of 3/4 " P.P.R pipes, including fittings, and all necessary work in accordance with the technical specifications and instructions of the supervising engineer.	25	Lin.m
2.8.3	Supply and installation of P.P.R pipes with a diameter of 0.5 inches including the connections and necessary for the completion of work in accordance with the technical specifications and instructions of the supervising engineer.	55	Lin.m
2.8.4	Supply and installation of ground siphon of excellent type, including the cover to be of iron coated with chromium and two layers of size not less than 15 × 15 cm, necessary for bathrooms, and all necessary to finish the work as required, according to technical specifications and instructions of the supervising engineer.	14	No
2.8.5	Supply and installation of 1.5-inch P.V.C pipes and pressure of 10 bar, including all necessary for the completion of work, for the need for sewage drainage line, and in accordance with technical specifications and instructions of the supervising engineer .	26	Lin.m
2.8.6	Supply and installation of pipes made of P.V.C with a diameter of 4 inches and a pressure of 10 bar, for the need to drainage sewage, and the price including the connections and everything necessary for the completion of work, according to technical specifications and instructions of the supervising engineer.	36	Lin.m
2.8.7	Supply and installation of pipes made of P.V.C with a diameter of 6 inches and a pressure of 10 bar, for the need to drainage sewage, and the price including the connections and everything necessary for the completion of work, according to technical specifications and instructions of the supervising engineer.	74	Lin.m
2.8.8	Supply and work of a complete inspection room, measuring 60 × 60 cm, and the evaluation of a depth of 1 meter of cast iron weighing not less than 70 kg, according to the technical specifications and instructions of the supervising engineer.	7	No

2.8.9	Supply and installation of water locking valves for P.P.R pipes with diameters 1/2, 3/4, 1 inch, according to the approved sample, technical procedures, and the instructions of the engineer.	24	No
2.8.10	Supply and installation of an Italian electrical water heater with a capacity of at least 80 liters of an excellent type, including switch and connections and what is necessary for the work, according to the approved sample and in accordance with the "technical principles and instructions of the supervising engineer.	2	No
2.8.11	Supply and installation of hand wash basins ( hanging), of excellent type complete with siphon, mixer and all necessary for the completion of work, as required, according to the approved sample and in accordance with the technical regulations and instructions of the supervising engineer.	10	No
2.8.12	Supply and install oriental toilets of excellent type complete with siphon and centrifuge box, with a capacity of at least 10 liters according to the approved sample and according to the technical rules and instructions of the supervising engineer.	8	No
2.8.13	Supply and install oriental toilets of excellent type complete with siphon and centrifuge box a capacity of at least 10 liters, with stainless steel handle according to the approved sample and according to the technical rules and instructions of the supervising engineer.	2	No
2.8.14	Supply and installation of an excellent type water tap of brass made of chromium plated copper for bathroom, according to the approved sample and according to the technical rules and instructions of the supervising engineer	10	No
2.8.15	Supplying and installing excellent roof drains to drain rainwater. The price includes drainage pipes and everything needed to complete the work in accordance with the technical principles and instructions of the supervising engineer.	2	No
2.8.16	Supplying and work a waterproofing layer of bitumen material (roll) according to the approved sample for roofs with a thickness of 4 mm, with skirting of no less than 30 cm (without a corresponding premium) accordance to the technical specifications, and the instructions of the supervising engineer.	90	M2
2.8.17	Supply and installation of a water tank capacity of 3 cubic meters of P.V.C material including mechanical buoy and all necessary for the completion of work in accordance with the technical regulations and instructions of the supervising engineer.	1	No
2.8.18	Supply and installing mirrors for toilets, and installation accordance to the technical principles and instructions of the supervising engineer>	5	M2
2.9	<b>Electrical works</b>		

2.9.1	Supply and laying copper electrical wires section 6mm2 insulated PVC PV 750 volts according to international specifications with the removal of old and assembled on site, accordance with technical regulations and instructions of the supervising engineer.	100	Lin.m
2.9.2	Supply and laying copper electrical wires section 4mm2 insulated PVC PV 750 volts according to international specifications with the removal of old and assembled on site, accordance with technical regulations and instructions of the supervising engineer.	250	Lin.m
2.9.3	Supply and installation of external wall lighting lantern first class of certified sample with LED 40 WATT and the price including everything necessary to complete the work in accordance with technical specifications and instructions of the supervising engineer	8	No
2.9.4	Supply and installation of LED lighting fixture (60 * 60 cm) of original European quality, according to the approved sample, and installed on the suspended ceiling according to the technical specifications and instructions of the supervising engineer.	12	No
2.9.5	Supply and installation of original single internal switch first grade 16 amp to control the lighting units and the price including the installation of a power box P.V.C first class and everything necessary to work .	3	No
2.9.6	Supply and installation of double electrical socket outlet first class 16 amp including land Price including installation of a power box P.V.C first class and everything necessary to work .	6	No
2.9.7	Supply and installation of a lighting circuit with a single switch including the extension of individual copper wires flexible insulated PVC PVC inside strong plastic pipes and buried inside the walls for three exits according to the technical principles and instructions of the supervising engineer .	2	No
2.9.8	Supply and installation of a metal main electrical distribution panel to connect the headlamp with a main switch four poles 100 amp Italian and the price includes the switches for connecting the headlamp.	1	No

#### Delivery Requirements

Delivery Requirements	
<b>Delivery date and time</b>	Bidder shall deliver the Works <b>in Sabha TVET Centre</b> , After Contract signature.
<b>Delivery Terms (INCOTERMS 2020)</b>	Bidder shall deliver the work based on the delivery schedule provided After Contract signature.
<b>Customs clearance (must be linked to INCOTERM)</b>	<input checked="" type="checkbox"/> Not applicable Shall be done by: <input type="checkbox"/> Name of organisation <input type="checkbox"/> Supplier/bidder <input type="checkbox"/> Freight Forwarder
<b>Exact Address(es) of Delivery Location(s)</b>	TVET center _ Sabha Libya

<b>Distribution of shipping documents (if using freight forwarder)</b>	N/A
<b>Packing Requirements</b>	N/A
<b>Training on Operations and Maintenance</b>	N/A
<b>Warranty Period</b>	1-year warranty
<b>After-sales service and local service support requirements</b>	N/A
<b>Preferred Mode of Transport</b>	Land
<b>Other information</b>	Contractors should provide their experience in Rehabilitation works is mandatory and that they are registered as construction company.

## ANNEX 2: QUOTATION SUBMISSION FORM

*Bidders are requested to complete this form, including the Company Profile and Bidder's Declaration, sign it and return it as part of their quotation along with Annex 3: Technical and Financial Offer. The Bidder shall fill in this form in accordance with the instructions indicated. No alterations to its format shall be permitted and no substitutions shall be accepted.*

Name of Bidder:	Click or tap here to enter text.	
RFQ reference:	4200533171	Date: Click or tap to enter a date.

### BIDDER'S DECLARATION OF CONFORMITY<sup>1</sup>

Yes	No	
<input type="checkbox"/>	<input type="checkbox"/>	On behalf of the Supplier, I hereby represent and warrant that neither the Supplier, nor any person having powers of representation, decision-making or control over it or any member of its administrative, management or supervisory body, has been the subject of a final judgement or final administrative decision for one of the following reasons: bankruptcy, insolvency or winding-up procedures; breach of obligations relating to the payment of taxes or social security contributions; grave professional misconduct, including misrepresentation, fraud; corruption; conduct related to a criminal organisation; money laundering or terrorist financing; terrorist offences or offences linked to terrorist activities; child labour and other trafficking in human beings, any discriminatory or exploitative practice, or any practice that is inconsistent with the rights set forth in the Convention on the Rights of the Child or other prohibited practices; irregularity; creating or being a shell company.
<input type="checkbox"/>	<input type="checkbox"/>	On behalf of the Supplier, I further represent and warrant that the Supplier is financially sound and duly licensed.
<input type="checkbox"/>	<input type="checkbox"/>	On behalf of the Supplier, I further represent and warrant that the Supplier has adequate human resources, equipment, competence, expertise and skills necessary to complete the contract fully and satisfactorily, within the stipulated completion period and in accordance with the relevant terms and conditions.
<input type="checkbox"/>	<input type="checkbox"/>	On behalf of the Supplier, I further represent and warrant that the Supplier complies with all applicable laws, ordinances, rules and regulations.
<input type="checkbox"/>	<input type="checkbox"/>	On behalf of the Supplier, I further represent and warrant that the Supplier will in all circumstances act in the best interests of IOM.
<input type="checkbox"/>	<input type="checkbox"/>	On behalf of the Supplier, I further represent and warrant that no official of IOM or any third party has received from, will be offered by, or will receive from the Supplier any direct or indirect benefit arising from the contract.
<input type="checkbox"/>	<input type="checkbox"/>	On behalf of the Supplier, I further represent and warrant that the Supplier has not misrepresented or concealed any material facts during the contracting process.
<input type="checkbox"/>	<input type="checkbox"/>	On behalf of the Supplier, I further represent and warrant that the Supplier will respect the legal status, privileges and immunities of IOM as an intergovernmental organization.
<input type="checkbox"/>	<input type="checkbox"/>	On behalf of the Supplier, I further represent and warrant that neither the Supplier nor any persons having powers of representation, decision-making or control over the Supplier or any member of its administrative, management or supervisory body are included in the most recent Consolidated United Nations Security Council Sanctions List (the "UN Sanctions List") or are the subject of any sanctions or other temporary suspension. The Supplier will immediately disclose to IOM if it or they become subject to any sanction or temporary suspension.

<sup>1</sup> This form is mandatory to fill in and sign by every vendor who submits quotation

Yes	No	
<input type="checkbox"/>	<input type="checkbox"/>	On behalf of the Supplier, I further represent and warrant that the Supplier does not employ, provide resources to, support, contract or otherwise deal with any person, entity or other group associated with terrorism as per the UN Sanctions List and any other applicable anti-terrorism legislation.
<input type="checkbox"/>	<input type="checkbox"/>	On behalf of the Supplier, I further represent and warrant that, the Supplier will apply the highest ethical standards, the principles of efficiency and economy, equal opportunity, open competition and transparency, and will avoid any conflict of interest.
<input type="checkbox"/>	<input type="checkbox"/>	On behalf of the Supplier, I further represent and warrant that the Supplier undertakes to comply with the Code of Conduct, available at <a href="https://www.ungm.org/Public/CodeOfConduct">https://www.ungm.org/Public/CodeOfConduct</a> .
<input type="checkbox"/>	<input type="checkbox"/>	It is the responsibility of the Supplier to inform IOM immediately of any change to the information provided in this Declaration.
<input type="checkbox"/>	<input type="checkbox"/>	On behalf of the Supplier, I certify that I am duly authorized to sign this Declaration and on behalf of the Supplier I agree to abide by the terms of this Declaration for the duration of any contract entered into between the Supplier and IOM.
<input type="checkbox"/>	<input type="checkbox"/>	IOM reserves the right to terminate any contract between IOM and the Supplier, with immediate effect and without liability, in the event of any misrepresentation made by the Supplier in this Declaration.

Signature: \_\_\_\_\_

Name: Click or tap here to enter text.

Title: Click or tap here to enter text.

Date: Click or tap to enter a date.

### ANNEX 3: TECHNICAL AND FINANCIAL OFFER - WORKS

Bidders are requested to complete this form, sign it and return it as part of their quotation along with Annex 2 Quotation Submission Form. The Bidder shall fill in this form in accordance with the instructions indicated. No alterations to its format shall be permitted and no substitutions shall be accepted.

Name of Bidder:	Click or tap here to enter text.	
RFQ reference:	4200533171	Date: Click or tap to enter a date.

#### Technical Offer

Provide the following:

- a brief description of your qualification and capacity that is relevant to the Scope of Works;
- a brief method statement and implementation plan;
- team composition and CVs of key personnel

#### Financial Offer

Item No	Minimum technical requirements	Qty	Unit	Total Price USD	Unit Price USD
1.1.1	Demolition and removal of buildings from limestone or brick, including foundations and transport of waste to public dumps , accordance to the instructions of the supervising engineer.	15	M3		
1.1.2	demolition and removing the external plaster for facades, and transferring the waste and preparing the place for new works, according to the technical specification and instructions of the supervising engineer	120	M2		
1.1.3	Cracking and removing the concrete of the floor in any thickness and the price including cleaning the place and transfer of waste to the landfills in accordance with the instructions of the supervising engineer.	40	M3		
1.1.4	Removal the aluminum windows and the metal windows protection, according to technical instructions and supervisor engineer.	9	No		
1.1.5	Remove old electricity conduit of any size .	150	Lin.M		
1.1.6	Cleaning the site through and after the implementation of the work and the price includes removing trees, weeds, bricks, stones, and everything necessary to finish the work, preparing the site for new works, and transferring the waste to public dumps, according to the instructions of the supervising engineer.	145	M3		
1.2	Civil works				

<b>1.2.1</b>	Excavation of for foundations at any type of soil, rate including excavations for Ground Beams for and removal of surplus to the dump area as directed by Engineer.	<b>20</b>	<b>M3</b>		
<b>1.2.2</b>	Backfilling up to under floors level & for foundations with approved quality compacted soil (not sand). from good surplus soil or supplied and free from the rubbish in accordance of the technical specifications and Engineer's instructions.	<b>800</b>	<b>M3</b>		
<b>1.2.3</b>	Supply and cast plain concrete C 20 under the bases, with thickness 10 cm according to the drawings and supervising engineer instruction.	<b>16</b>	<b>M2</b>		
<b>1.2.4</b>	Supply and cast reinforced concrete for foundation with stress thresholds break 25N/MM <sup>2</sup> and stress fracture 80kgm/m <sup>3</sup> according to drawings and technical instructions of supervising engineer.	<b>5</b>	<b>M3</b>		
<b>1.2.5</b>	Supply and cast reinforced concrete for Ground beam with stress thresholds break 30N/MM <sup>2</sup> and stress fracture 115kgm/m <sup>3</sup> according to drawings and technical instructions of supervising engineer.	<b>5.5</b>	<b>M3</b>		
<b>1.2.6</b>	Supplying and pouring reinforced concrete for columns, thresholds, and upper walls with a breaking stress of 30 N/mm <sup>2</sup> , and 115 kg/m <sup>3</sup> of reinforcing steel, according to the maps, drawings, and the instructions of the supervising engineer.	<b>5</b>	<b>M3</b>		
<b>1.2.7</b>	Supply and work of concrete roads courses size 35 × 15 × 10 cm, the work of concrete mattress and fixing from the back with concrete and flesh separators bridges cement mortar according to technical regulations and instructions of the supervising engineer.	<b>481</b>	<b>Lin.M</b>		
<b>1.2.8</b>	Supply and cast plain concrete 25N/MM <sup>2</sup> , thickness 15 cm for for sidewalks and yard floors, and foundation according to the specification and engineer instructions.	<b>942</b>	<b>M2</b>		
<b>1.2.9</b>	Excavation and casting of the concrete for a ground tank with a capacity of 10 M3 (forming system with a thickness of 10 cm) The work includes casting the floor and the cover and installing a manhole for maintenance. according to instructions of the supervising engineer.	<b>1</b>	<b>No</b>		

<b>1.2.10</b>	Supply and construction of hollow concrete brick walls 20 cm thickness cement mortar (3: 1) consisting of 440 kg cement + 1 m3 sand, according to the instructions of the supervising engineer.	<b>180</b>	<b>M2</b>		
<b>1.2.11</b>	Supply and work plaster for the inside walls and ceilings with cement mortar. (3: 1) Consists of 440 kg cement + 1 m3, according to the technical rules and instructions of the supervising engineer.	<b>520</b>	<b>M2</b>		
<b>1.2.12</b>	Supply and work plaster for the walls and external facades of two layers, the first with a thickness of 15 mm and a mixture (1: 3) and the second layer of 350 kg cement + 580 kg limestone powder + 1170 kg sand + marble powder + pigments in the desired color, according to the instructions of the supervising engineer.	<b>210</b>	<b>M2</b>		
<b>1.3</b>	<b>Painting Works</b>				
<b>1.3.1</b>	Supply and work for interior walls and ceilings with a normal preparatory face, and two sides of the emulsion of paint white plastic, and the price includes the rubbing of old paint, and put the necessary paste according to technical principles and instructions of the supervising engineer.	<b>1820</b>	<b>M2</b>		
<b>1.3.2</b>	Supply and work of interior wall paint with a preparatory face of oil and two sides of matte oil paint, according to the sample, color and the approved texture, according to the technical regulations and instructions of the supervising engineer.	<b>950</b>	<b>M2</b>		
<b>1.3.3</b>	Supply and implementation of graphite works for exterior facades and entrances, according to the color and texture sample approved by the supervising engineer.	<b>1390</b>	<b>M2</b>		
<b>1.3.4</b>	Supplying and making an insulating layer of hot bitumen to paint the bases, screeds and column, accordance with the technical principles and the instructions of the supervising engineer.	<b>100</b>	<b>M2</b>		
<b>1.4</b>	<b>Floors and walls tiles works</b>				
<b>1.4.1</b>	Supply and installation of ceramic tiles for floors Spanish anti-slip first class according to specifications and technical assets and the adoption of the sample from the supervising engineer.	<b>492</b>	<b>M2</b>		
<b>1.4.2</b>	Supply and installation of colored faience tiles for the walls for buffet from first-class Spanish, in the required size and color, with the approval of the sample from the supervising engineer. according to technical principles.	<b>26</b>	<b>M2</b>		

1.4.3	Supply and installation of a granite marble table for buffet,( 70 cm wide, 3 cm thick, and 95 cm high), with ornaments and everything necessary to complete the work according to technical principles and the engineer's instructions.	3	Lin.m		
1.4.4	Supply and installation of 3 cm thick marble for windows, doors frames, and stairs. The price includes making ornaments from Selvia type, according to the required dimensions, technical assets and the instructions of the supervising engineer.	172	M2		
1.4.5	Supplying and installing a 10 cm wide ceramic skirt, in accordance to the technical principles and the instructions of the supervising engineer.	216	Lin.m		
1.4.6	Supplying and work a waterproofing layer of bitumen material (roll) according to the approved sample for roofs with a thickness of 4 mm, with skirting of no less than 15 cm the price includes making a layer of regular concrete with a thickness of 5 cm(without a corresponding premium) accordance to the technical specifications, and the instructions of the supervising engineer.	725	M2		
1.5	<b>Doors, Windows and Metal works</b>				
1.5.1	Supplying and installing doors made of mahogany wood, consisting of one or two leaves, including hardware, handles, frames and paints from an approved sample, and everything necessary to complete the work according to the technical principles and the instructions of the supervising engineer.	6	M2		
1.5.2	Supply and installation of steel protection doors (laser blacksmith) thickness of 4 mm according to the approved sample and price including packaging with plastic plates, hardware, locks, paints and all necessary for the completion of the work accordance to the technical regulations and instructions of the supervising engineer.	35	M2		
1.5.3	Supply and installation of protective iron (laser blacksmithing) thickness of 4 mm for the windows according to the sample and the approved form, the price including frame and paints and all that is necessary to do the work according to the technical principles and instructions of the supervising engineer	54	M2		
1.5.4	Supply and installation of a Metal Shade with a sandwich roof. according to engineer and the following technical specifications:• The main beams should be (I-beams) with a width of 20 cm, allcolumns should connected by these beams in both directions (X,Y).• The sub-beams (C-beams). The distance between sub-beams lessthan 1m in the longitudinal direction.• The roof of the sandwich is 10 cm thick.• All steel members as beams & bolts should be galvanized.	58	M2		

1.5.5	Supplying and installing PVC windows wooden color, according to the approved sample. The price includes all that is necessary for the work to complete, accordance to the technical principles and instructions of the supervising engineer.	54	M2		
1.5.6	Supplying and installing PVC Doors wooden color, according to the approved sample. The price includes all that is necessary for the work to complete, accordance to the technical principles and instructions of the supervising engineer.	4.4	M2		
1.5.7	Supply and installation of suspended ceiling from almuinum panels (60x60) cm, as approved sample and according to technical specifications and engineer instructions.	512	M2		
1.5.8	Supplying and installation of a gypsum board walls with a thickness of 10 cm with all necessary works according to the design and instructions of the supervising engineer.	24	M2		
1.5.9	Supply and implementation of landscaping of ready-made grass type Basbelm and the item includes the preparation of soil and leveling and compacting before and after planting, irrigation and supplementary fertilizer and care as prescribed by the supervising authority.	370	M2		
1.6	<b>Water and Sanitation works</b>				
1.6.1	Supply and installation of 2 " P.P.R pipes, including fittings, and all necessary work in accordance with the technical specifications and instructions of the supervising engineer.	3	Lin.m		
1.6.2	Supply and installation of 1 " P.P.R pipes, including fittings, and all necessary work in accordance with the technical specifications and instructions of the supervising engineer.	100	Lin.m		
1.6.3	Supply and installation of 3/4 " P.P.R pipes, including fittings, and all necessary work in accordance with the technical specifications and instructions of the supervising engineer.	15	Lin.m		
1.6.4	Supply and installation of P.P.R pipes with a diameter of 0.5 inches including the connections and necessary for the completion of work in accordance with the technical specifiactions and instructions of the supervising engineer.	12	Lin.m		
1.6.5	Supply and installation of ground siphon of excellent type, including the cover to be of iron coated with chromium and two layers of size not less than 15 × 15 cm, for bathrooms, and all necessary to finish the work as required, according to technical specifications and instructions of the supervising engineer .	1	No		

<b>1.6.6</b>	Supply and installation of 1.5-inch P.V.C pipes and pressure of 10 bar, including all necessary for the completion of work, for the need for sewage drainage line, and in accordance with technical specifications and instructions of the supervising engineer .	<b>6</b>	<b>Lin.m</b>		
<b>1.6.7</b>	Supply and installation of pipes made of P.V.C with a diameter of 6 inches and a pressure of 10 bar, for the need to drainage sewage, and the price including the connections and everything necessary for the completion of work, according to technical specifications and instructions of the supervising engineer.	<b>18</b>	<b>Lin.m</b>		
<b>1.6.8</b>	Supply and work of a complete inspection room, measuring 80 × 80 cm, and the evaluation of a depth of 1 meter of cast iron weighing not less than 70 kg, according to the technical specifications and instructions of the supervising engineer.	<b>2</b>	<b>No</b>		
<b>1.6.9</b>	Supply and installation of water locking valves for P.P.R pipes with diameters 1/2, 3/4, 1,2 inch, according to the approved sample, technical procedures and the instructions of the engineer.	<b>5</b>	<b>No</b>		
<b>1.6.10</b>	Supply and installation of an Italian electrical water heater with a capacity of at least 50 liters of an excellent type, including switch and connections and what is necessary for the work, according to the approved sample and in accordance with the "technical principles and instructions of the supervising engineer.	<b>1</b>	<b>No</b>		
<b>1.6.11</b>	Supplying and installing an excellent steel wash basin, including mixer and siphon, and everything needed to complete the work as required, according to the approved sample, in accordance with the technical specifications and the instructions of the supervising engineer.	<b>1</b>	<b>No</b>		
<b>1.6.12</b>	Supply and installation of a water tank capacity of 1 cubic meters of P.V.C material including mechanical buoy and all necessary for the completion of work in accordance with the technical regulations and instructions of the supervising engineer.	<b>1</b>	<b>No</b>		
<b>1.6.13</b>	Supply and installation of water pump power 1 hp excellent type, from a certified sample installed in accordance with technical regulations and instructions of the supervising engineer.	<b>1</b>	<b>No</b>		
<b>1.6.14</b>	Supply and installation of water pump power 1/2 hp excellent type, from a certified sample installed in accordance with technical regulations and instructions of the supervising engineer.	<b>1</b>	<b>No</b>		

<b>1.6.15</b>	Supply and implementation of a fixed irrigation network to cover all the green area consisting of polyethylene pipes according to the required diameters in full accessories with control switches and self-propelled sprinklers from the bottom to up and vice versa and watered according to the required angle according to the approved quality.	<b>370</b>	<b>M2</b>		
<b>1.7</b>	<b>Electrical works</b>				
<b>1.7.1</b>	Supply and install copper electrical wires section 2.5mm <sup>2</sup> insulated PVC PV 750 volts according to international specifications with the removal of old and assembled on site, accordance with technical specifications and instructions of the supervising engineer.	<b>1800</b>	<b>Lin.m</b>		
<b>1.7.2</b>	Supply and install copper electrical wires section 4mm <sup>2</sup> insulated PVC PV 750 volts according to international specifications with the removal of old and assembled on site, accordance with technical specifications and instructions of the supervising engineer.	<b>2760</b>	<b>Lin.m</b>		
<b>1.7.3</b>	Supply and install copper electrical wires section 6mm <sup>2</sup> insulated PVC PV 750 volts according to international specifications with the removal of old and assembled on site, accordance with technical specifications and instructions of the supervising engineer.	<b>1200</b>	<b>Lin.m</b>		
<b>1.7.4</b>	Supply, install electrical cables 4x16 mm <sup>2</sup> made of copper insulated with a plastic compound with high insulation, such as polyvinyl chloride (PVC) or polyethylene (XLPE), voltage of 600/1000 volts. The price includes excavation, laying cable termination and connection.	<b>85</b>	<b>Lin.m</b>		
<b>1.7.5</b>	Supply, install and test electrical cables 4x16 mm <sup>2</sup> made of copper insulated with a plastic compound with high insulation, such as polyvinyl chloride (PVC) or polyethylene (XLPE), voltage of 600/1000 volts. The price includes excavation, laying cable termination and connection.	<b>111</b>	<b>Lin.m</b>		
<b>1.7.6</b>	Supply and installation of LED lighting fixture 120 watt (60 * 60 cm) of original European quality, according to the approved sample, and installed on the suspended ceiling according to the technical specifications and instructions of the supervising engineer.	<b>58</b>	<b>No</b>		
<b>1.7.7</b>	SSupply and installation of 400 watt LED headlamps from an approved sample, the price includes cables and switches and all that is necessary to complete the work in accordance with the technical principles and the instructions of the supervising engineer.	<b>16</b>	<b>No</b>		

<b>1.7.8</b>	Supply and installation of original single internal switch first grade 16 amp to control the lighting units and the price including the installation of a power box P.V.C first class and everything necessary to work .	<b>18</b>	<b>No</b>		
<b>1.7.9</b>	Supply and installation of double electrical socket outlet first class 16 amp including land Price including installation of a power box P.V.C first class and everything necessary to work .	<b>74</b>	<b>No</b>		
<b>1.7.10</b>	Complete weather proof outdoor single socket outlet 2P+E, 16 A.	<b>6</b>	<b>No</b>		
<b>1.7.11</b>	Supply and installation of a lighting circuit with a single switch including the extension of individual copper wires flexible insulated PVC PVC inside strong plastic pipes and buried inside the walls for three exits according to the technical principles and instructions of the supervising engineer .	<b>18</b>	<b>No</b>		
<b>1.7.12</b>	Supply and installation of main wall distribution board with differential switch four poles 200 amp and price including brakers to feed lighting, and sockets .	<b>1</b>	<b>No</b>		
<b>1.7.13</b>	Supply and installation of main wall distribution board with differential switch four poles 63 amp and price including brakers to feed lighting, and sockets .	<b>3</b>	<b>No</b>		
<b>1.7.14</b>	Supply and installation of fire-extinguisher of 6 Kg weights, the work includes installation on wall.	<b>16</b>	<b>EA</b>		
<b>1.7.15</b>	Supply and installation of air conditioners of 9000 BTU power inverter, including the switch, connection wires, and all necessary works, according to the approved sample and the instructions of the supervising engineer.	<b>2</b>	<b>No</b>		
<b>1.7.16</b>	Supply and installation of air conditioners of 12000 BTU power inverter, including the switch, connection wires, and all necessary works, according to the approved sample and the instructions of the supervising engineer.	<b>16</b>	<b>No</b>		
<b>1.7.17</b>	Supply and installation of ventilation fans 60 * 60 cm with excellent and approved quality. The item includes all connections and the operating switch according to the technical specifications and instructions of the supervising engineer.	<b>3</b>	<b>No</b>		
<b>2</b>	<b>Construction of Toilets</b>				
<b>2.1</b>	<b>Excavation and backfilling works</b>				

<b>2.1.1</b>	Excavation of for foundations up to 1.2m deep in in any kind of soil, rate including removal of surplus to the dump area according to the instructions of the supervising engineer.	<b>45</b>	<b>M3</b>		
<b>2.1.2</b>	Supply soil suitable for backfilling from outside the site for various backfilling purposes, brushing, leveling, and compacting it according to the technical principles and the instructions of the supervising engineer.	<b>105</b>	<b>M3</b>		
<b>2.2</b>	<b>Concrete works</b>				
<b>2.2.1</b>	Supply and cast plain concrete C 20 under the bases, with thickness 10 cm according to the drawings and supervising engineer instruction.	<b>103</b>	<b>M2</b>		
<b>2.2.2</b>	Supply and cast reinforced concrete for foundation with stress thresholds break 25N/MM <sup>2</sup> and stress fracture 80kgm/m <sup>3</sup> according to drawings and technical instructions of supervising engineer.	<b>8</b>	<b>M3</b>		
<b>2.2.3</b>	Supply and cast reinforced concrete for Ground beam with stress thresholds break 30N/MM <sup>2</sup> and stress fracture 115kgm/m <sup>3</sup> according to drawings and technical instructions of supervising engineer.	<b>7.5</b>	<b>M3</b>		
<b>2.2.4</b>	Supply and cast reinforced concrete for columns with stress thresholds break 30N/MM <sup>2</sup> and stress fracture 115kgm/m <sup>3</sup> according to the drawings technical instructions of supervising engineer.	<b>4.8</b>	<b>M3</b>		
<b>2.2.5</b>	Supply and implement reinforced concrete for Ribbed Slabs (Hordi Roof Slab) with Clay Hollow Blocks (Ajori Bricks) with stress thresholds break 25N/MM <sup>2</sup> according to the technical specifications and drawings and instructions of the supervising engineer, and the price includes the upper concrete layer.	<b>84</b>	<b>M2</b>		
<b>2.2.6</b>	Supply and install concrete curbstones size 35 × 15 × 25 cm, the work includes concrete slab and fixing from the back with concrete and filling the joints with cement mortar according to technical specification and instructions of the supervising engineer.	<b>40</b>	<b>Lin.M</b>		
<b>2.3</b>	<b>Block WORKS</b>				

<b>2.3.1</b>	Supply & build hollow concrete blocks size 40x20x20cm, built with cement sand mortar (1:3) mix according to technical specification and instruction of Engineer.	<b>270</b>	<b>M2</b>		
<b>2.3.2</b>	Supply & build hollow concrete blocks size 40x15x20cm, built with cement sand mortar (1:3) mix according to technical specification and instruction of Engineer.	<b>71</b>	<b>M2</b>		
<b>2.4</b>	<b>Plastering works</b>				
<b>2.4.1</b>	Supply and make external plastering 25 mm thick. The work includes rough 15 mm primer rendering with cement sand mortar (1:3) mix and metal mesh at concrete block work joints, edges and openings, finishing 10 mm coat with 350 Kg cement+ 580 Kg limestone powder + 1170 Kg sand mix, .	<b>336</b>	<b>M2</b>		
<b>2.4.2</b>	Supply and make internal plastering (15) mm thick for walls and ceiling with cement sand mortar (1:3) mix made of 440 Kg cement + 1 CU.M sand. The work includes rough 5 mm primer rendering, finishing coat 10 mm and metal mesh at concrete block work joints, edges and openings.	<b>18</b>	<b>M2</b>		
<b>2.5</b>	<b>Painting works</b>				
<b>2.5.1</b>	Supply & paint Graffito for exterior , one under coat primer and The work include cleaning the surface and all required works.	<b>336</b>	<b>M2</b>		
<b>2.5.2</b>	Supply and work for interior walls and ceilings with a normal preparatory face, and two sides of the emulsion of paint white plastic, and the price includes the rubbing of old paint, and put the necessary paste according to technical principles and instructions of the supervising engineer.	<b>78</b>	<b>M2</b>		
<b>2.5.3</b>	Supply and work of interior wall paint with a preparatory face of oil and two sides of matte oil paint, according to the sample, color and the approved texture, according to the technical regulations and instructions of the supervising engineer	<b>18</b>	<b>M2</b>		

2.5.4	Supplying and making an insulating layer of hot bitumen to paint the bases, screeds and column , accordance with the technical principles and the instructions of the supervising engineer.	120	M2		
2.6	<b>Floors and walls tiles works</b>				
2.6.1	Supply and installation of colored walls tiles grade A the sample to be approved. According to technical specification and supervising engineer instructions.	107	M2		
2.6.2	Supply and installation of spanish floor ceramic tiles. The sample to be approved. According to technical specifications and supervising engineer instructions	70	M2		
2.6.3	Supply and installation of cement tiles for roofs, thickness of 20 mm, and the price includes skirts of the same type of tiles with cement mortar consisting of 250 kg of cement, per cubic meter of sand, taking into account the inclinations towards the gutters, according to the technical principles and the instructions of the supervising engineer.	84	M2		
2.6.4	Supply and installation of marble thickness of 3 cm to sit, from the Egyptian Silvia ornaments for windows and doors, according to the technical assets and instructions of the supervising engineer.	47	M2		
2.7	<b>Metal works</b>				
2.7.1	Supply and installation of steel protection doors (laser blacksmith) thickness of 4 mm according to the approved sample and price including packaging with Sheets of fiber, hardware, locks, paints and all necessary for the completion of the work accordance to the technical regulations and instructions of the supervising engineer.	6	M2		
2.7.2	Supply and installation of protective iron (laser blacksmithing) thickness of 4 mm for the windows according to the sample and the approved form, the price including frame and paints and all that is necessary to do the work according to the technical principles and instructions of the supervising engineer	4	M2		

<b>2.7.3</b>	Supply and installation of P.V.C doors single leaf (white) including locks and hardware from an approved sample to be installed in accordance with the technical regulations and instructions of the supervising engineer.	<b>22</b>	<b>M2</b>		
<b>2.7.4</b>	Supply and installation of P.V.C windows single leaf (white) including locks and hardware from an approved sample to be installed in accordance with the technical regulations and instructions of the supervising engineer.	<b>4</b>	<b>M2</b>		
<b>2.7.5</b>	Supply and installation of suspended ceiling from aluminium panels (60x60) cm, as approved sample and according to technical specifications and engineer instructions.	<b>62</b>	<b>M2</b>		
<b>2.7.6</b>	Supply and installation of guiding signs painted by golden color according to the approved sample.for the room entrances , according to the supervising engineer's instructions.	<b>6</b>	<b>No</b>		
<b>2.8</b>	<b>Water and Sanitation works</b>				
<b>2.8.1</b>	Supply and installation of 1 " P.P.R pipes, including fittings, and all necessary work in accordance with the technical specifications and instructions of the supervising engineer.	<b>60</b>	<b>Lin.m</b>		
<b>2.8.2</b>	Supply and installation of 3/4 " P.P.R pipes, including fittings, and all necessary work in accordance with the technical specifications and instructions of the supervising engineer.	<b>25</b>	<b>Lin.m</b>		
<b>2.8.3</b>	Supply and installation of P.P.R pipes with a diameter of 0.5 inches including the connections and necessary for the completion of work in accordance with the technical specifications and instructions of the supervising engineer.	<b>55</b>	<b>Lin.m</b>		
<b>2.8.4</b>	Supply and installation of ground siphon of excellent type, including the cover to be of iron coated with chromium and two layers of size not less than 15 × 15 cm, necessary for bathrooms, and all necessary to finish the work as required, according to technical specifications and instructions of the supervising engineer .	<b>14</b>	<b>No</b>		
<b>2.8.5</b>	Supply and installation of 1.5-inch P.V.C pipes and pressure of 10 bar, including all necessary for the completion of work, for the need for sewage drainage line, and in accordance with technical specifications and instructions of the supervising engineer .	<b>26</b>	<b>Lin.m</b>		

<b>2.8.6</b>	Supply and installation of pipes made of P.V.C with a diameter of 4 inches and a pressure of 10 bar, for the need to drainage sewage, and the price including the connections and everything necessary for the completion of work, according to technical specifications and instructions of the supervising engineer.	<b>36</b>	<b>Lin.m</b>		
<b>2.8.7</b>	Supply and installation of pipes made of P.V.C with a diameter of 6 inches and a pressure of 10 bar, for the need to drainage sewage, and the price including the connections and everything necessary for the completion of work, according to technical specifications and instructions of the supervising engineer.	<b>74</b>	<b>Lin.m</b>		
<b>2.8.8</b>	Supply and work of a complete inspection room, measuring 60 × 60 cm, and the evaluation of a depth of 1 meter of cast iron weighing not less than 70 kg, according to the technical specifications and instructions of the supervising engineer.	<b>7</b>	<b>No</b>		
<b>2.8.9</b>	Supply and installation of water locking valves for P.P.R pipes with diameters 1/2, 3/4, 1 inch, according to the approved sample, technical procedures and the instructions of the engineer.	<b>24</b>	<b>No</b>		
<b>2.8.10</b>	Supply and installation of an Italian electrical water heater with a capacity of at least 80 liters of an excellent type, including switch and connections and what is necessary for the work, according to the approved sample and in accordance with the "technical principles and instructions of the supervising engineer.	<b>2</b>	<b>No</b>		
<b>2.8.11</b>	Supply and installation of hand wash basins ( hanging), of excellent type complete with siphon, mixer and all necessary for the completion of work, as required, according to the approved sample and in accordance with the technical regulations and instructions of the supervising engineer.	<b>10</b>	<b>No</b>		
<b>2.8.12</b>	Supply and install oriental toilets of excellent type complete with siphon and centrifuge box, with a capacity of at least 10 liters according to the approved sample and according to the technical rules and instructions of the supervising engineer.	<b>8</b>	<b>No</b>		
<b>2.8.13</b>	Supply and install oriental toilets of excellent type complete with siphon and centrifuge box a capacity of at least 10 liters, with stainless steel handle according to the approved sample and according to the technical rules and instructions of the supervising engineer.	<b>2</b>	<b>No</b>		
<b>2.8.14</b>	Supply and installation of an excellent type water tap of brass made of chromium plated copper for bathroom, according to the approved sample and according to the technical rules and instructions of the supervising engineer	<b>10</b>	<b>No</b>		

<b>2.8.15</b>	Supplying and installing excellent roof drains to drain rainwater. The price includes drainage pipes and everything needed to complete the work in accordance with the technical principles and instructions of the supervising engineer.	<b>2</b>	<b>No</b>		
<b>2.8.16</b>	Supplying and work a waterproofing layer of bitumen material (roll) according to the approved sample for roofs with a thickness of 4 mm, with skirting of no less than 30 cm (without a corresponding premium) accordance to the technical specifications, and the instructions of the supervising engineer.	<b>90</b>	<b>M2</b>		
<b>2.8.17</b>	Supply and installation of a water tank capacity of 3 cubic meters of P.V.C material including mechanical buoy and all necessary for the completion of work in accordance with the technical regulations and instructions of the supervising engineer.	<b>1</b>	<b>No</b>		
<b>2.8.18</b>	Supply and installing mirrors for toilets, and installation accordance to the technical principles and instructions of the supervising engineer>	<b>5</b>	<b>M2</b>		
<b>2.9</b>	<b>Electrical works</b>				
<b>2.9.1</b>	Supply and laying copper electrical wires section 6mm <sup>2</sup> insulated PVC PV 750 volts according to international specifications with the removal of old and assembled on site, accordance with technical regulations and instructions of the supervising engineer.	<b>100</b>	<b>Lin.m</b>		
<b>2.9.2</b>	Supply and laying copper electrical wires section 4mm <sup>2</sup> insulated PVC PV 750 volts according to international specifications with the removal of old and assembled on site, accordance with technical regulations and instructions of the supervising engineer.	<b>250</b>	<b>Lin.m</b>		
<b>2.9.3</b>	Supply and installation of external wall lighting lantern first class of certified sample with LED 40 WATT and the price including everything necessary to complete the work in accordance with technical specifications and instructions of the supervising engineer	<b>8</b>	<b>No</b>		
<b>2.9.4</b>	Supply and installation of LED lighting fixture (60 * 60 cm) of original European quality, according to the approved sample, and installed on the suspended ceiling according to the technical specifications and instructions of the supervising engineer.	<b>12</b>	<b>No</b>		
<b>2.9.5</b>	Supply and installation of original single internal switch first grade 16 amp to control the lighting units and the price including the installation of a power box P.V.C first class and everything necessary to work .	<b>3</b>	<b>No</b>		

<b>2.9.6</b>	Supply and installation of double electrical socket outlet first class 16 amp including land Price including installation of a power box P.V.C first class and everything necessary to work .	<b>6</b>	<b>No</b>		
<b>2.9.7</b>	Supply and installation of a lighting circuit with a single switch including the extension of individual copper wires flexible insulated PVC PVC inside strong plastic pipes and buried inside the walls for three exits according to the technical principles and instructions of the supervising engineer .	<b>2</b>	<b>No</b>		
<b>2.9.8</b>	Supply and installation of a metal main electrical distribution panel to connect the headlamp with a main switch four poles 100 amp Italian and the price includes the switches for connecting the headlamp.	<b>1</b>	<b>No</b>		
<b>Total Amount</b>					

#### Compliance with Requirements

	You Responses		
	Yes, we will comply	No, we cannot comply	If you cannot comply, pls. indicate counter proposal
Delivery Lead Time	<input type="checkbox"/>	<input type="checkbox"/>	Click or tap here to enter text.
Validity of Quotation	<input type="checkbox"/>	<input type="checkbox"/>	Click or tap here to enter text.
Payment terms	<input type="checkbox"/>	<input type="checkbox"/>	Click or tap here to enter text.
Other requirements <i>[pls. specify]</i>	<input type="checkbox"/>	<input type="checkbox"/>	Click or tap here to enter text.

I, the undersigned, certify that I am duly authorized to sign this quotation and bind the company below in event that the quotation is accepted.

<b>Exact name and address of company</b> Company Name: Click or tap here to enter text. Address: Click or tap here to enter text. Click or tap here to enter text. Phone No.: Click or tap here to enter text. Email Address: Click or tap here to enter text.	Authorized Signature: Date: Click or tap here to enter text. Name: Click or tap here to enter text. Functional Title of Authorised Signatory: Click or tap here to enter text. Email Address: Click or tap here to enter text.
---	--

ANNEX A_ BILL OF QUANTITIES							
Rehabilitation of TVET building in Sabha							
Location:Sabha							
Project Time Frame:							
م.م	بيان الاعمال	السعر الاجمالي	UNIT Price(\$) سعر الوحدة	UNIT الوحدة	QTY. الكمية	DESCRIPTION	
1	اعمال صيانة المبنى الإداري ومبنى قاعات التدريب وإنشاء مستودع					Rehabilitation of theAdministrative building and the training halls Buolding and the construction of a warehouse	1
1.1	أعمال الإزالة					Demolition and preparation works	1.1
1.1.1	هدم وإزالة المباني من الحجر الجيري أو الطوب المفرغ شاملاً الأساسات ونقل المخلفات إلى المطالب العمومية طبقاً لتعليمات المهندس المشرف.			M3	15	Demolition and removal of buildings from limestone or brick, including foundations and transport of waste to public dumps , accordance to the instructions of the supervising engineer.	1.1.1
1.1.2	تكسير وإزالة طبقة البياض الخارجية للجوانب ونقل المخلفات ونهية المكان لأعمال الجديدة، طبقاً للأصول الفنية وتعليمات المهندس المشرف.			M2	120	demolition and removing the external plaster for facades, and transferring the waste and preparing the place for new works, according to the technical specification and instructions of the supervising engineer	1.1.2
1.1.3	تكسير وإزالة خرسانة وبأي سمك و السعر شامل تنظيف المكان ونقل المخلفات إلى المطالب العمومية طبقاً لتعليمات المهندس المشرف.			M3	40	Cracking and removing the concrete of the floor in any thickness and the price including cleaning the place and transfer of waste to the landfills in accordance with the instructions of the supervising engineer.	1.1.3
1.1.4	فك وخلع الحلق، وتسليم الصالح منها للمخازن، طبقاً للأصول الفنية وتعليمات المهندس المشرف.			No	9	Removal the aluminum windows and the metal windows protection, according to technical instructions and supervisor engineer.	1.1.4
1.1.5	إزالة مواسير الكهرباء القديمة و بمختلف الأقطار .			Lin.M	150	Remove old electricity conduit of any size .	1.1.5
1.1.6	إزالة و تنظيف الموقع من المخلفات الداخلية والخارجية والسعر شامل إزالة الأشجار والحشائش والظوب والأحجار وكل مايلزم لنهو العمل ونهية الموقع للأعمال الجديدة مع نقل المخلفات إلى المطالب العمومية، حسب تعليمات المهندس المشرف.			M3	145	Cleaning the site through and after the implementation of the work and the price includes removing trees, weeds, bricks, stones, and everything necessary to finish the work, preparing the site for new works, and transferring the waste to public dumps, according to the instructions of the supervising engineer.	1.1.6
Sub-Total							
1.2	أعمال المدنية					Civil works	1.2
1.2.1	حفر الأساسات في نوع من أنواع التربة بما في ذلك الكمرات الأرضية، في أي نوع من أنواع التربة ، وإزالة الفائض إلى منطقة التفريغ حسب توجيهات المهندس.			M3	20	Excavation of for foundations at any type of soil, rate including excavations for Ground Beams for and removal of surplus to the dump area as directed by Engineer.	1.2.1
1.2.2	توريد أدوية صالحة للردم في مستوى الأساسات والأرضيات من خارج الموقع لأغراض الردم المختلفة وفرشها، وذلك حسب الأصول الفنية وتعليمات المهندس المشرف.			M3	800	Backfilling up to under floors level & for foundations with approved quality compacted soil (not sand), from good surplus soil or supplied and free from the rubbish in accordance of the technical specifications and Engineer's instructions.	1.2.2
1.2.3	توريد وصب خرسانة عادية C20 أسفل القواعد، والكمرات بسمك 10 سم حسب المخططات تعليمات المهندس المشرف.			M2	16	Supply and cast plain concrete C 20 under the bases, with thickness 10 cm according to the drawings and supervising engineer instruction.	1.2.3
1.2.4	توريد وصب خرسانة مسلحة لزوم القواعد بإجهاد كسر 25 نيوتن / مم² وحديد تسليح بنسبة 80 كجم / م³ لزوم قواعد ، حسب المخططات و طبقاً للأصول الفنية وتعليمات المهندس المشرف.			M3	5	Supply and cast reinforced concrete for foundation with stress thresholds break 25N/MM² and stress fracture 80kgm/m³ according to drawings and technical instructions of supervising engineer.	1.2.4
1.2.5	توريد وصب خرسانة مسلحة لزوم السلات والكمرات بإجهاد كسر 30 نيوتن / مم² وحديد تسليح بنسبة 115 كجم / م³ حسب المخططات و طبقاً للأصول الفنية وتعليمات المهندس المشرف.			M3	5.5	Supply and cast reinforced concrete for Ground beam with stress thresholds break 30N/MM² and stress fracture 115kgm/m³ according to drawings and technical instructions of supervising engineer.	1.2.5
1.2.6	توريد وصب خرسانة مسلحة لزوم الأعمدة والأعتاب وأعلى الأسوار بإجهاد كسر 30 نيوتن/مم²، وحديد تسليح بنسبة 115 كجم / م³، طبقاً للخرائط والرسومات المعتمدة وتعليمات المهندس المشرف.			M3	5	Supplying and pouring reinforced concrete for columns, thresholds, and upper walls with a breaking stress of 30 N/mm2, and 115 kg/m3 of reinforcing steel, according to the maps, drawings, and the instructions of the supervising engineer.	1.2.6
1.2.7	توريد وعمل بر دورات طرق خرسانية مغاس 10x15x35 سم، عمل فرشاة خرسانية وتثبيت من الخلف بالخرسانة ولحم فواصل الدورات بعلاط الإسمنت طبقاً للأصول الفنية وتعليمات المهندس المشرف.			Lin.M	481	Supply and work of concrete roads courses size 35 × 15 × 10 cm, the work of concrete mattress and fixing from the back with concrete and flesh separators bridges cement mortar according to technical regulations and instructions of the supervising engineer.	1.2.7
1.2.8	توريد وتنفيذ خرسانة عادية بإجهاد كسر 25 نيوتن/مم²، وسمك 15 سم، لزوم الأرصفة، وأرضية الساحات، مع تسوية السطح وعمل فواصل التمدد، طبقاً للأصول الفنية وتعليمات المهندس المشرف.			M2	942	Supply and cast plain concrete 25N/MM² , thickness 15 cm for for sidewalks and yard floors, and foundation according to the specification and engineer instructions.	1.2.8
1.2.9	توريد وصب خزان مياه ارضي بسعة 10 متر مكعب ( نظام فويرات بسمك 10 سم ) والسعر شامل صب الأرضية والسقف وتركيب الغطاء لزوم الصيانة وكل مايلزم لنهو العمل طبقاً للأصول الفنية وتعليمات المهندس المشرف.			No	1	Excavation and casting of the concrete for a ground tank with a capacity of 10 M3 (forming system with a thickness of 10 cm) The work includes casting the floor and the cover and installing a manhole for maintenance. according to instructions of the supervising engineer.	1.2.9
1.2.10	توريد وبناء حوائط من الطوب الأسمنتي المفرغ سمك 20 سم مونة إسمنتية ( 3 : 1 ) يتكون من 440 كجم أسمنت + 3م³ رمل، طبقاً للأصول الفنية، وحسب تعليمات المهندس المشرف.			M2	180	Supply and construction of hollow concrete brick walls 20 cm thickness cement mortar (3: 1) consisting of 440 kg cement + 1 m3 sand, according to the instructions of the supervising engineer.	1.2.10

1.2.11	Supply and work plaster for the inside walls and ceilings with cement mortar. (3: 1) Consists of 440 kg cement + 1 m3, according to the technical rules and instructions of the supervising engineer.	520	M2			توريد وعمل لياسة للجوانب والأسقف الداخلية بمونة إسمنتية. (3:1) يتكون من 440 كجم أسمنت + 1 م <sup>3</sup> ، والسعر شامل معالجة الشقوق ، طبقاً للأصول الفنية وتعليمات المهندس المشرف.	1.2.11
1.2.12	Supply and work plaster for the walls and external facades of two layers, the first with a thickness of 15 mm and a mixture (1: 3) and the second layer of 350 kg cement + 580 kg limestone powder + 1170 kg sand + marble powder + pigments in the desired color, according to the instructions of the supervising engineer.	210	M2			توريد وعمل لياسة للجوانب والواجهات الخارجية من طبقتين، الأولى بسمك 15 مم وخلطة (3 : 1) والطبقة الثانية من 350 كجم أسمنت + 580 كجم مسحوق الحجر الجيري+ 1170 كجم رمل + بودرة الرخام، والسعر شامل معالجة الشقوق ، طبقاً للأصول الفنية وتعليمات المهندس المشرف..	1.2.12
	<b>Sub-Total</b>						
<b>1.3</b>	<b>Painting Works</b>						<b>1.3 أعمال الدهانات</b>
1.3.1	Supply and work for interior walls and ceilings with a normal preparatory face, and two sides of the emulsion of paint white plastic, and the price includes the rubbing of old paint, and put the necessary paste according to technical principles and instructions of the supervising engineer.	1820	M2			توريد وعمل طلاء للجدران والأسقف الداخلية بوجه تحضيري عادي، ووجهين من مستحلب دهان البلاستيك الأبيض، ويشمل السعر حك الطلاء القديم، وعمل المعجون اللازم طبقاً للأصول الفنية وتعليمات المهندس المشرف.	1.3.1
1.3.2	Supply and work of interior wall paint with a preparatory face of oil and two sides of matte oil paint, according to the sample, color and the approved texture, according to the technical regulations and instructions of the supervisin	950	M2			توريد وعمل طلاء الجوانب الداخلية بوجه تحضيري من الزيت ووجهين من دهان الزيت المصطنع، طبقاً للأصول الفنية وتعليمات المهندس المشرف.	1.3.2
1.3.3	Supply and implementation of graphite works for exterior facades and entrances, according to the color and texture sample approved by the supervising engineer.	1390	M2			توريد وتقليد أعمال الجرافيت للواجهات الخارجية والمداخل، وطبقاً لعينة اللون والملمس المعتمدين من المهندس المشرف.	1.3.3
1.3.4	Supplying and making an insulating layer of hot bitumen to paint the bases, screeds and column , accordance with the technical principles and the instructions of the supervising engineer.	100	M2			توريد وعمل طبقة عازلة من البيتومين الساخن لزوم دهان القواعد والسملات و رقاب الأعمدة طبقاً للأصول الفنية وتعليمات المهندس المشرف.	1.3.4
	<b>Sub-Total</b>						
<b>1.4</b>	<b>Floors and walls tiles works</b>						<b>1.4 أعمال تلمسية الأرضيات والجوانب</b>
1.4.1	Supply and installation of ceramic tiles for floors Spanish anti-slip first class according to specifications and technical assets and the adoption of the sample from the supervising engineer.	492	M2			توريد وتركيب بلاط سيراميك للأرضيات إسباني مانع للانزلاق درجة أولى طبقاً للمواصفات والأصول الفنية واعتماد العينة من المهندس المشرف.	1.4.1
1.4.2	Supply and installation of colored faience tiles for the walls for buffet from first-class Spanish, in the required size and color, with the approval of the sample from the supervising engineer. according to technical principles.	26	M2			توريد وتركيب بلاط فيشاني ملون لزوم جوانب وأرضيات البوفيه إسباني درجة أولى بالمقاس واللون المطلوب مع اعتماد العينة من المهندس المشرف. طبقاً للأصول الفنية.	1.4.2
1.4.3	Supply and installation of a granite marble table for buffet,( 70 cm wide, 3 cm thick, and 95 cm high), with ornaments and everything necessary to complete the work according to technical principles and the engineer's instructions.	3	Lin.m			توريد وتركيب طاولة رخاميته من الجرانيت لزوم والبوفيه ( بعرض 70 سم وسمك 3سم وارتفاع 95 سم )، مع التثبيت بقوائم رخامية والحليات وكل مايلزم لنهو العمل حسب الأصول الفنية وتعليمات المهندس.	1.4.3
1.4.4	Supply and installation of 3 cm thick marble for windows, doors frames, and stairs. The price includes making ornaments from Selvia type, according to the required dimensions, technical assets and the instructions of the supervising engineer.	172	M2			توريد وتركيب رخام سمك 3سم لزوم الجلسات النوافذ والابواب والدرج السعر شامل عمل الحليات من نوع سيلفيا المصري وذلك طبقاً للمقاسات المطلوبة من والأصول الفنية وتعليمات المهندس المشرف.	1.4.4
1.4.5	Supplying and installing a 10 cm wide ceramic skirt, in accordance to the technical principles and the instructions of the supervising engineer.	216	Lin.m			توريد وتركيب ورد سيراميك عرض 10 سم، وذلك طبقاً للأصول الفنية وتعليمات المهندس المشرف.	1.4.5
1.4.6	Supplying and work a waterproofing layer of bitumen material (roll) according to the approved sample for roofs with a thickness of 4 mm, with skirting of no less than 15 cm the price includes making a layer of regular concrete with a thickness of 5 cm(without a corresponding premium) accordance to the technical specifications, and the instructions of the supervising engineer.	725	M2			توريد وعمل طبقة عازلة للرطوبة من مادة البيتومين ( رول ) حسب العينة المعتمدة وذلك للأسطح سمك 4 ملم مع عمل وردة مائلة لا تقل عن 15 سم ، والسعر شامل عمل طبقة من الخرسانة العادية بسمك 5 سم ( بدون علاوة نظير ذلك ) طبقاً للمواصفات الفنية وتعليمات المهندس المشرف.	1.4.6
	<b>Sub-Total</b>						
<b>1.5</b>	<b>Doors, Windows and Metal works</b>						<b>1.5 أعمال الابواب والشبابيك والأسقف المعلقة</b>
1.5.1	Supplying and installing doors made of mahogany wood, consisting of one or two leaves, including hardware, handles, frames and paints from an approved sample, and everything necessary to complete the work according to the technical principles and the instructions of the supervising engineer.	6	M2			توريد وتركيب ابواب من الخشب الماهوجي يتكون من شلفة او شلفتين شامل الخردوات والمقابض والافطارات والدهانات من عينة معتمدة وكل مايلزم لنهو العمل طبقاً للأصول الفنية وتعليمات المهندس المشرف.	1.5.1
1.5.2	Supply and installation of steel protection doors (laser blacksmith) thickness of 4 mm according to the approved sample and price including packaging with plastic plates, hardware, locks, paints and all necessary for the completion of the work accordance to the technical regulations and instructions of the supervising engineer.	35	M2			توريد وتركيب ابواب حماية من الحديد ( حداده ليزرية ) سمك 4 مم من شلفة واحدة وشفلتين حسب العينة والشكل المعتمد والسعر شامل الدهانات والأقفال والمقابض والخردوات والتغطية بشراخح الفايبر وكل مايلزم لنهو العمل وذلك طبقاً للأصول الفنية وتعليمات المهندس المشرف.	1.5.2
1.5.3	Supply and installation of protective iron (laser blacksmithing) thickness of 4 mm for the windows according to the sample and the approved form, the price including frame and paints and all that is necessary to do the work according to the technical principles and instructions of the supervising engineer	54	M2			، توريد وتركيب حديد حماية ( حداده ليزرية ) سمك 4 مم حسب العينة والشكل المعتمد والسعر شامل الاطارات والدهانات وكل مايلزم لنهو العمل حسب الأصول الفنية وتعليمات المهندس المشرف.	1.5.3
1.5.4	Supply and installation of a Metal Shade with a sandwich roof. according to engineer and the following technical specifications: • The main beams should be (I-beams) with a width of 20 cm, all columns should be connected by these beams in both directions (X, Y). • The sub-beams (C-beams). The distance between sub-beams less than 1m in the longitudinal direction. • The roof of the sandwich is 10 cm thick. • All steel members as beams & bolts should be galvanized.	58	M2			توريد وتركيب سقف معدني والتغطية من السنوتوش وفقاً لتعليمات المهندس المشرف والمواصفات الفنية الآتية: • تكون العوارض (الكمرات) الرئيسية من باتريلى (beam) بعرض 20 سم . • اما العوارض الفرعية فلا تتجاوز المسافة بين 1 متر في الاتجاه الطولي. • يكون السقف من sandwich بسمك 10سم. • تكون جميع عناصر الحديد مجلفنة.	1.5.4
1.5.5	Supplying and installing PVC windows wooden color, according to the approved sample. The price includes all that is necessary for the work to complete, accordance to the technical principles and instructions of the supervising engineer.	54	M2			توريد وتركيب شبابيك من PVC لون خشبي من عينة معتمدة والسعر شامل كل مايلزم لنهو العمل وذلك طبقاً للأصول الفنية وتعليمات المهندس المشرف.	1.5.5
1.5.6	Supplying and installing PVC Doors wooden color, according to the approved sample. The price includes all that is necessary for the work to complete, accordance to the technical principles and instructions of the supervising engineer.	4.4	M2			توريد وتركيب ابواب من PVC لون خشبي من عينة معتمدة والسعر شامل كل مايلزم لنهو العمل وذلك طبقاً للأصول الفنية وتعليمات المهندس المشرف.	1.5.6

1.5.7	Supply and installation of suspended ceiling from almuinum panels (60x60) cm, as approved sample and according to technical specifications and engineer instructions.	512	M2			توريد وتركيب الأسقف معلقة من شرايح الالومنيوم ( 60*60 سم )إمن العينة المعتمدة، وذلك طبقاً للأصول الفنية وتعليمات المهندس المشرف.	1.5.7
1.5.8	Supplying and installation of a gypsum board walls with a thickness of 10 cm with all necessary works according to the design and instructions of the supervising engineer.	24	M2			توريد وعمل حوائط من مادة جيبس أموزد بسمك 10 سم وكل مايلزم لنهـو العمل التصميم وتعليمات المهندس المشرف .	1.5.8
1.5.9	Supply and implementation of landscaping of ready-made grass type Basbelm and the item includes the preparation of soil and leveling and compacting before and after planting, irrigation and supplementary fertilizer and care as prescribed by the supervising authority.	370	M2			توريد وتنفيذ مسطحات خضراء من الحيلة الجاهزة نوع ياسيليم و البند يشمل تجهيز التربة وتسويتها و دكها قبل و بعد الزراعة و الري و السماد التكميلي و الرعاية المقررة حسب تعليمات الجهة المشرفة .	1.5.9
	<b>Sub-Total</b>						
1.6	<b>Water and Sanitation works</b>					<b>أعمال المياه وتصريف مياه الأمطار.</b>	1.6
1.6.1	Supply and installation of 2 " P.P.R pipes, including fittings, and all necessary work in accordance with the technical specifications and instructions of the supervising engineer.	3	Lin.m			توريد وتركيب مواسير P.P.R بقطر 2 بوصة شاملاً الوصلات وما يلزم لنهـو العمل طبقاً للأصول الفنية وتعليمات المهندس المشرف.	1.6.1
1.6.2	Supply and installation of 1 " P.P.R pipes, including fittings, and all necessary work in accordance with the technical specifications and instructions of the supervising engineer.	100	Lin.m			توريد وتركيب مواسير P.P.R بقطر 1 بوصة شاملاً الوصلات وما يلزم لنهـو العمل طبقاً للأصول الفنية وتعليمات المهندس المشرف.	1.6.2
1.6.3	Supply and installation of 3/4 " P.P.R pipes, including fittings, and all necessary work in accordance with the technical specifications and instructions of the supervising engineer.	15	Lin.m			توريد وتركيب مواسير P.P.R بقطر 3/4 بوصة شاملاً الوصلات وما يلزم لنهـو العمل طبقاً للأصول الفنية وتعليمات المهندس المشرف.	1.6.3
1.6.4	Supply and installation of P.P.R pipes with a diameter of 0.5 inches including the connections and necessary for the completion of work in accordance with the technical speciifactions and instructions of the supervising engineer .	12	Lin.m			توريد وتركيب مواسير P.P.R بقطر 0.5 بوصة شاملاً الوصلات وما يلزم لنهـو العمل طبقاً للأصول الفنية وتعليمات المهندس المشرف.	1.6.4
1.6.5	Supply and installation of ground siphon of excellent type, including the cover to be of iron coated with chromium and two layers of size not less than 15 × 15 cm, for bathrooms, and all necessary to finish the work as required, according to technical specifications and instructions of the supervising engineer .	1	No			توريد وتركيب سيفون أرضي من النوع الممتاز، شاملاً الغطاء على أن يكون من الحديد المطلي بمادة الكروم ومن طبقتين بمقاس لا يقل عن 15 × 15 سم، لزوم الحمامات و كل ما يلزم لنهـو العمل بالشكل المطلوب، وذلك طبقاً للأصول الفنية وتعليمات المهندس المشرف.	1.6.5
1.6.6	Supply and installation of 1.5-inch P.V.C pipes and pressure of 10 bar, including all necessary for the completion of work, for the need for sewage drainage line, and in accordance with technical specifications and instructions of the supervising engineer .	6	Lin.m			توريد وتركيب مواسير P.V.C قطر 1.5 بوصة وضغط 10 بار، شاملاً كل مايلزم لنهـو العمل، لزوم خط تصريف مياه المجاري، وطبقاً للأصول الفنية وتعليمات المهندس المشرف.	1.6.6
1.6.7	Supply and installation of pipes made of P.V.C with a diameter of 6 inches and a pressure of 10 bar, for the need to drainage sewage, and the price including the connections and everything necessary for the completion of work, according to technical specifications and instructions of the supervising engineer.	18	Lin.m			توريد وتركيب مواسير مصنوعة من P.V.C و بقطر 6 بوصة وضغط 10 بار، لزوم تصريف مياه المجاري، و السعر شاملاً الوصلات و كل ما يلزم لنهـو العمل وذلك طبقاً للأصول الفنية وتعليمات المهندس المشرف.	1.6.7
1.6.8	Supply and work of a complete inspection room, measuring 80 × 80 cm, and the evaluation of a depth of 1 meter of cast iron weighing not less than 70 kg, according to the technical specifications and instructions of the supervising engineer.	2	No			توريد وعمل غرفة تفتيش كاملة مجاميعه، بقياس 80×80سم، ويعمق 1متر شاملاً غطاء من الزهر لا يقل وزنه عن 70 كجم، وذلك طبقاً للأصول الفنية وتعليمات المهندس المشرف.	1.6.8
1.6.9	Supply and installation of water locking valves for P.P.R pipes with diameters 1/2, 3/4, 1, 2 inch, according to the approved sample, technical procedures and the instructions of the engineer.	5	No			توريد وتركيب محابس لقفـل المياه لمواسير P.P.R بأقطار 1/2، 3/4، 1، 2 بوصة، طبقاً للعينة المعتمدة والأصول الفنية وتعليمات المهندس المشرف.	1.6.9
1.6.10	Supply and installation of an Italian electrical water heater with a capacity of at least 50 liters of an excellent type, including switch and connections and what is necessary for the work, according to the approved sample and in accordance with the "technical principles and instructions of the supervising engineer.	1	No			توريد وتركيب سخانة مياه كهربائية إيطالية سعة 50 لتر على الأقل من نوع ممتاز، شاملاً المفتاح والتوصيلات مايلزم لنهـو العمل و ذلك حسب العينة المعتمدة و طبقاً" للأصول الفنية وتعليمات المهندس المشرف.	1.6.10
1.6.11	Supplying and installing an excellent steel wash basin, including mixer and siphon, and everything needed to complete the work as required, according to the approved sample, in accordance with the technical specifications and the instructions of the supervising engineer.	1	No			توريد وتركيب حوض غسل أولي من نوع ستل ممتاز، شاملاً الخلاط والسيفون، وكل مايلزم لنهـو العمل بالشكل المطلوب، وذلك حسب العينة المعتمدة و طبقاً للأصول الفنية وتعليمات المهندس المشرف.	1.6.11
1.6.12	Supply and installation of a water tank capacity of 1 cubic meters of P.V.C material including mechanical buoy and all necessary for the completion of work in accordance with the technical regulations and instructions of the supervising engineer.	1	No			توريد وتركيب خزان مياه سعة 1 متر مكعب من مادة P.V.C شاملاً العوامة ميكانيكية وكل مايلزم لنهـو العمل طبقاً للأصول الفنية وتعليمات المهندس المشرف.	1.6.12
1.6.13	Supply and installation of water pump power 1 hp excellent type, from a certified sample installed in accordance with technical regulations and instructions of the supervising engineer.	1	No			توريد وتركيب مضخة مياه قووة 1 حصان نوع ممتاز، من عينة معتمدة تركيب طبقاً للأصول الفنية وتعليمات المهندس المشرف.	1.6.13
1.6.14	Supply and installation of water pump power1/2 hp excellent type, from a certified sample installed in accordance with technical regulations and instructions of the supervising engineer.	1	No			توريد وتركيب مضخة مياه قووة 1/2 حصان نوع ممتاز، من عينة معتمدة تركيب طبقاً للأصول الفنية وتعليمات المهندس المشرف.	1.6.14
1.6.15	Supply and implementation of a fixed irrigation network to cover all the green area consisting of polyethylene pipes according to the required diameters in full accessories with control switches and self-propelled sprinklers from the bottom to up and vice versa and watered according to the required angle according to the approved quality.	370	M2			توريد وتنفيذ شبكة ري ثابتة لتغطية جميع المساحة الخضراء مكونة من مواسير بولي إيثيلين حسب الأقطار المطلوبة بكامل ملحقاتها مع مقايح التحكم و رشاشات ذاتية الحركة من أسفل لأعلى و العكس و تروى حسب الزاوية المطلوبة حسب النوعية المعتمدة .	1.6.15
	<b>Sub-Total</b>						
1.7	<b>Electrical works</b>					<b>للأعمال الكهربائية</b>	1.7
1.7.1	Supply and install copper electrical wires section 2.5mm2 insulated PVC PV 750 volts according to international specifications with the removal of old and assembled on site, accordance with technical specifications and instructions of the supervising engineer.	1800	Lin.m			توريد و مد أسلاك كهربائية نحاسية مقطعة 2.5 مم2 شعيرة مرنة معزولة بمادة بي. في. سي. 750 فولت حسب المواصفات العالمية و المد بواسطة مواسير بي. في. سي. مدفونة داخل الحوائط و ذلك طبقاً للأصول الفنية و تعليمات المهندس المشرف .	1.7.1
1.7.2	Supply and install copper electrical wires section 4mm2 insulated PVC PV 750 volts according to international specifications with the removal of old and assembled on site, accordance with technical specifications and instructions of the supervising engineer.	2760	Lin.m			توريد و مد أسلاك كهربائية نحاسية مقطعة 4 مم2 شعيرة مرنة معزولة بمادة بي. في. سي. 750 فولت حسب المواصفات العالمية و المد بواسطة مواسير بي. في. سي. مدفونة داخل الحوائط و ذلك طبقاً للأصول الفنية و تعليمات المهندس المشرف .	1.7.2
1.7.3	Supply and install copper electrical wires section 6mm2 insulated PVC PV 750 volts according to international specifications with the removal of old and assembled on site, accordance with technical specifications and instructions of the supervising engineer.	1200	Lin.m			توريد و مد أسلاك كهربائية نحاسية مقطعة 6 مم2 شعيرة مرنة معزولة بمادة بي. في. سي. 750 فولت حسب المواصفات العالمية و المد بواسطة مواسير بي. في. سي. مدفونة داخل الحوائط و ذلك طبقاً للأصول الفنية و تعليمات المهندس المشرف .	1.7.3

1.7.4	Supply, install electrical cables 4x16 mm <sup>2</sup> made of copper insulated with a plastic compound with high insulation, such as polyvinyl chloride (PVC) or polyethylene (XLPE), voltage of 600/1000 volts. The price includes excavation, laying cable termination and connection.	85	Lin.m			توريد وتركيب الكابلات الكهربائية 4x25 مم <sup>2</sup> مصنوعة من النحاس المعزول بمركب بلاستيكي ذو عزل عالي ، مثل البولي فينيل كلوريد (PVC) أو البولي إيثيلين (XLPE) ، بجهد 600/1000 فولت. يشمل السعر أعمال الحفر ومد الكوابل وربطها.	1.7.4
1.7.5	Supply, install and test electrical cables 4x16 mm <sup>2</sup> made of copper insulated with a plastic compound with high insulation, such as polyvinyl chloride (PVC) or polyethylene (XLPE), voltage of 600/1000 volts. The price includes excavation, laying cable termination and connection.	111	Lin.m			توريد وتركيب واختبار الكابلات الكهربائية 4x16 مم <sup>2</sup> مصنوعة من النحاس المعزول بمركب بلاستيكي ذو عزل عالي ، مثل البولي فينيل كلوريد (PVC) أو البولي إيثيلين (XLPE) ، بجهد 600/1000 فولت. يشمل السعر أعمال الحفر ومد الكوابل وربطها.	1.7.5
1.7.6	Supply and installation of LED lighting fixture 120 watt (60 * 60 cm) of original European quality, according to the approved sample, and installed on the suspended ceiling according to the technical specifications and instructions of the supervising engineer.	58	No			توريد وتركيب قاعدة إنارة (60*60 سم ) LED وات 120 ومن نوعية أوروبية أصلية وذلك حسب العينة المعتمدة وتركيب على السقف المعلق طبقا للأصول الفنية وتعليمات المهندس المشرف .	1.7.6
1.7.7	Ssupply and installation of 400 watt LED headlamps from an approved sample, the price includes cables and switches and all that is necessary to complete the work in accordance with the technical principles and the instructions of the supervising engineer.	16	No			توريد وتركيب كشافات كهربائية 400 وات ليد من عينة معتمدة والسعر شامل الكابلات والمفاتيح وكل ما يلزم لنهوا العمل طبقا للأصول الفنية وتعليمات المهندس المشرف .	1.7.7
1.7.8	Supply and installation of original single internal switch first grade 16 amp to control the lighting units and the price including the installation of a power box P.V.C first class and everything necessary to work .	18	No			توريد وتركيب مفتاح كهرباء داخلي فريدي أصلي درجة أولى 16 أمبير لتحكم في وحدات الإنارة و السعر شامل تركيب علبه كهرباء P.V.C درجة أولى وكل ما يلزم لنهوا العمل .	1.7.8
1.7.9	Supply and installation of double electrical socket outlet first class 16 amp including land Price including installation of a power box P.V.C first class and everything necessary to work .	74	No			توريد وتركيب مخرج كهربائي زوجي أصلي درجة أولى 16 أمبير شامل الأراضي السعر شامل تركيب علبه كهرباء P.V.C درجة أولى وكل ما يلزم لنهوا العمل .	1.7.9
1.7.10	Complete weather proof outdoor single socket outlet 2P+E, 16 A.	6	No			بريزة فريدي خارجية مصادة للرطوبة 16 الأمبير كاملة بوصلة القطب الأرضي . ( مجوفة جزائرية)	1.7.10
1.7.11	Supply and installation of a lighting circuit with a single switch including the extension of individual copper wires flexible insulated PVC PVC inside strong plastic pipes and buried inside the walls for three exits according to the technical principles and instructions of the supervising engineer .	18	No			توريد وتركيب دائرة إنارة مع مفتاح فريدي شامل مد الأسلاك الفردية نحاسية مرنة معزولة بال بي.في.سي داخل مواسير بلاستيكية قوية ومدفونة داخل الحوائط وذلك لثلاث مخارج طبقا للأصول الفنية وتعليمات المهندس المشرف	1.7.11
1.7.12	Supply and installation of main wall distribution board with differential switch four poles 200 amp and price including brakers to feed lighting, and sockets .	1	No			توريد وتركيب لوحة توزيع كهرباء رئيسية حائطية للتغذية مع مفتاح رئيسي 200 امبير تفاضلي أربعة أقطاب 200 أمبير و السعر شامل فواصل 100 امبير لزوم المعايي.	1.7.12
1.7.13	Supply and installation of main wall distribution board with differential switch four poles 63 amp and price including brakers to feed lighting, and sockets .	3	No			توريد وتركيب لوحة توزيع كهرباء رئيسية حائطية للتغذية مع مفتاح رئيسي 63 امبير و السعر شامل الفواصل لتغذية الإنارة والبرايز و المكيفات و السخانات .	1.7.13
1.7.14	Supply and installation of fire-extinguisher of 6 Kg weights, the work includes installation on wall.	16	EA			توريد وتركيب أسطوانات لإطفاء الحريق نوع بودر وزن 6 كيلو والعمل يشمل التثبيت .	1.7.14
1.7.15	Supply and installation of air conditioners of 9000 BTU power inverter, including the switch, connection wires, and all necessary works, according to the approved sample and the instructions of the supervising engineer.	2	No			توريد وتركيب مكيفات هواء قوة 9 قطعتين انفورتر شامل المفتاح وأسلاك التوصيل وكل ما يلزم لنهوا العمل وذلك بحسب العينة المعتمدة طبقا للأصول الفنية وتعليمات المهندس المشرف .	1.7.15
1.7.16	Supply and installation of air conditioners of 12000 BTU power inverter, including the switch, connection wires, and all necessary works, according to the approved sample and the instructions of the supervising engineer.	16	No			توريد وتركيب مكيفات هواء قوة 12 قطعتين انفورتر شامل المفتاح وأسلاك التوصيل وكل ما يلزم لنهوا العمل وذلك بحسب العينة المعتمدة طبقا للأصول الفنية وتعليمات المهندس المشرف .	1.7.16
1.7.17	Supply and installation of ventilation fans 60 * 60 cm with excellent and approved quality. The item includes all connections and the operating switch according to the technical specifications and instructions of the supervising engineer.	3	No			توريد وتركيب شفاط هواء مقاس 60 * 60 سم من نوعية ممتازة و معتمدة و البند يشمل جميع التوصيلات و المفتاح التشغيل و كل ما يلزم لنهوا العمل طبقا للأصول الفنية و تعليمات المهندس المشرف .	1.7.17
	Sub-Total						
	Total COST in USD						
NOTES/(In Arabic)							
ر.م	بيان الأعمال	السعر الاجمالي TOTAL Price	سعر الوحدة UNIT Price(\$)	الوحدة UNIT	الكمية QTY.	DESCRIPTION	
2	انشاء دورات مياه					Construction of Toilets	2
2.1	أعمال الحفر والردم					Excavation and backfilling works	2.1
2.1.1	أعمال حفر الأساسات لمعق 1.2 متر ، في أي نوع تربة، السعر يشمل إزالة الفائض الي منطقة التفريغ حسب تعليمات المهندس المشرف.					Excavation of for foundations up to 1.2m deep in in any kind of soil, rate including removal of surplus to the dump area according to the instructions of the supervising engineer.	2.1.1
2.1.2	توريد اترية صالحة للردم من خارج الموقع لأغراض الردم المختلفة وفرشها وتسويتها وذلكها طبقا للأصول الفنية وتعليمات المهندس المشرف.					Supply soil suitable for backfilling from outside the site for various backfilling purposes, brushing, leveling, and compacting it according to the technical principles and the instructions of the supervising engineer.	2.1.2

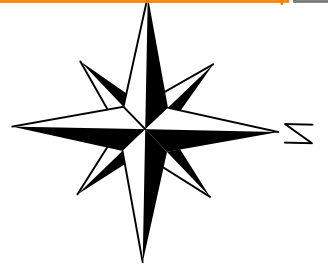
		Sub-Total					
2.2	Concrete works					الأعمال الخرسانية	2.2
2.2.1	Supply and cast plain concrete C 20 under the bases, with thickness 10 cm according to the drawings and supervising engineer instruction.	103	M2			توريد وصب خرسانة عادية C20 أسفل القواعد، والكرسة بسمك 10 سم حسب المخططات تعليمات المهندس المشرف.	2.2.1
2.2.2	Supply and cast reinforced concrete for foundation with stress thresholds break 25N/MM² and stress fracture 80kgm/m³ according to drawings and technical instructions of supervising engineer.	8	M3			توريد وصب خرسانة مسلحة لزوم القواعد، بإجهاد كسر 25 نيوتن / مم² وحديد تسليح بنسبة 80 كجم / م³ لزوم قواعد، حسب المخططات وطبقاً للأصول الفنية وتعليمات المهندس المشرف.	2.2.2
2.2.3	Supply and cast reinforced concrete for Ground beam with stress thresholds break 30N/MM² and stress fracture 115kgm/m³ according to drawings and technical instructions of supervising engineer.	7.5	M3			توريد وصب خرسانة مسلحة لزوم السمات بإجهاد كسر 30 نيوتن / مم² وحديد تسليح بنسبة 115 كجم / م³ حسب المخططات وطبقاً للأصول الفنية وتعليمات المهندس المشرف.	2.2.3
2.2.4	Supply and cast reinforced concrete for columns with stress thresholds break 30N/MM² and stress fracture 115kgm/m³ according to the drawings technical instructions of supervising engineer.	4.8	M3			توريد وصب خرسانة مسلحة لزوم الأعمدة والاعتاب بإجهاد كسر 30 نيوتن/مم² ، وحديد تسليح بنسبة 115 كجم / م³ حسب المخططات وطبقاً للأصول الفنية وتعليمات المهندس المشرف.	2.2.4
2.2.5	Supply and implement reinforced concrete for Ribbed Slabs (Hordi Roof Slab) with Clay Hollow Blocks (Ajori Bricks) with stress thresholds break 25N/MM² according to the technical specifications and drawings and instructions of the supervising engineer, and the price includes the upper concrete layer.	84	M2			توريد وتنفيذ أسفلق من الخرسانة المسلحة من بلاطات مفترقة باستخدام الطوب الأجر وإجهاد كسر 25 نيوتن / مم² حسب الخرائط والرسومات الفنية وتعليمات المهندس المشرف، والسعر يشمل طبقة الخرسانة العلوية.	2.2.5
2.2.6	Supply and install concrete curbstones size 35 × 15 × 25 cm, the work includes concrete slab and fixing from the back with concrete and filling the joints with cement mortar according to technical specification and instructions of the supervising engineer.	40	Lin.M			توريد وعمل بر دورات طرق خرسانية مقاس 25×15×35 سم، عمل فرشاة خرسانية وتثبيت من الخلف بالخرسانة وإلحم فواصل البردورات بملاط الأسمنت طبقاً للأصول الفنية وتعليمات المهندس المشرف.	2.2.6
		Sub-Total					
2.3	Block WORKS					أعمال المباني	2.3
2.3.1	Supply & build hollow concrete blocks size 40x20x20cm, built with cement sand mortar (1:3) mix according to technical specification and instruction of Engineer.	270	M2			توريد وبناء حوائط من الطوب الأسمنتي المفرغ سمك 20*40*20 سم مونه إسمنتية (1:3) حسب المواصفات الفنية وتعليمات المهندس المشرف.	2.3.1
2.3.2	Supply & build hollow concrete blocks size 40x15x20cm, built with cement sand mortar (1:3) mix according to technical specification and instruction of Engineer.	71	M2			توريد وبناء حوائط من الطوب الأسمنتي المفرغ سمك 15*40*20 سم مونه إسمنتية (1:3) حسب المواصفات الفنية وتعليمات المهندس المشرف.	2.3.2
		Sub-Total					
2.4	Plastering works					أعمال البياسه	2.4
2.4.1	Supply and make external plastering 25 mm thick. The work includes rough 15 mm primer rendering with cement sand mortar (1:3) mix and metal mesh at concrete block work joints, edges and openings, finishing 10 mm coat with 350 Kg cement+ 580 Kg limestone powder + 1170 Kg sand mix, .	336	M2			توريد وعمل لباسة خارجية بسمك 25 مم. يشمل العمل الطبقة التمهيدية 15 مم مع ملاط الرمل الأسمنتي (1: 3) وشبكة معدنية في فواصل وحواف وفتحات البلوك الخرساني ، وطبقة نهائية 10 مم مع 350 كجم أسمنت + 580 كجم مسحوق الحجر الجيري + 1170 كجم مزيج الرمل .	2.4.1
2.4.2	Supply and make internal plastering (15) mm thick for walls and ceiling with cement sand mortar (1:3) mix made of 440 Kg cement + 1 CU.M sand. The work includes rough 5 mm primer rendering, finishing coat 10 mm and metal mesh at concrete block work joints, edges and openings.	18	M2			توريد وعمل لباسة داخلية (15 مم) للجدران والسقف بمونة أسمنتية رملية (1: 3) (خلطة من 440 كجم أسمنت + 1 متر مكعب من الرمل. يشمل العمل طبقة أولية 5 مم وطبقة نهائية 10 مم وشبكة معدنية عند فواصل وحواف وفتحات البلوك الخرساني.	2.4.2
		Sub-Total					
2.5	Painting works					أعمال الدهانات	2.5
2.5.1	Supply & paint Graffito for exterior , one under coat primer and The work include cleaning the surface and all required works.	336	M2			تنفيذ وتوريد أعمال جرافيت للأجهات الخارجية وولحد تحت الطلاء ويشمل العمل تنظيف السطح وجميع الأعمال المطلوبة.	2.5.1
2.5.2	Supply and work for interior walls and ceilings with a normal preparatory face, and two sides of the emulsion of paint white plastic, and the price includes the rubbing of old paint, and put the necessary paste according to technical principles and instructions of the supervising engineer.	78	M2			توريد وعمل طلاء للحوائط والأسقف الداخلية بوجه تحضيري عادي، ووجهين من مستحلب دهان البلاستيك الأبيض، وعمل المعجون اللازم طبقاً للأصول الفنية وتعليمات المهندس المشرف.	2.5.2
2.5.3	Supply and work of interior wall paint with a preparatory face of oil and two sides of matte oil paint, according to the sample, color and the approved texture, according to the technical regulations and instructions of the supervisin	18	M2			توريد وعمل طلاء الحوائط الداخلية بوجه تحضيري من الزيت ووجهين من دهان الزيت المطفى، طبقاً للأصول الفنية وتعليمات المهندس المشرف.	2.5.3
2.5.4	Supplying and making an insulating layer of hot bitumen to paint the bases, screeds and column , accordance with the technical principles and the instructions of the supervising engineer.	120	M2			توريد وعمل طبقة عازلة من البيتومين الساخن لزوم دهان القواعد و السلات و رقاب الأعمدة طبقاً للأصول الفنية وتعليمات المهندس المشرف.	2.5.4
		Sub-Total					

2.6	Floors and walls tiles works					2.6	أعمال تكمية الأرضيات والحوائط
2.6.1	Supply and installation of colored walls tiles grade A the sample to be approved. According to technical specification and supervising engineer instructions.	107	M2			2.6.1	توريد وتركيب بلاط قبشاني ملون لزوم حوائط إسباني درجة أولى بالمقاس واللون المطلوب مع اعتماد العينة من المهندس المشرف. طبقاً للأصول الفنية.
2.6.2	Supply and installation of spanish floor ceramic tiles. The sample to be approved. According to technical specifications and supervising engineer instructions	70	M2			2.6.2	توريد وتركيب بلاط سيراميك للأرضيات إسباني مانع للانزلاق درجة أولى طبقاً للمواصفات والأصول الفنية واعتماد العينة من المهندس المشرف.
2.6.3	Supply and installation of cement tiles for roofs, thickness of 20 mm, and the price includes skirts of the same type of tiles with cement mortar consisting of 250 kg of cement, per cubic meter of sand, taking into account the inclinations towards the gutters, according to the technical principles and the instructions of the supervising engineer.	84	M2			2.6.3	توريد وتركيب بلاط أسمنتي للأسطح سمك 20 مم، والسعر يشمل وزرّت من نفس نوع البلاط بمونة أسمنتية تتكون من 250 كجم أسمنت، للمتر المكعب من الرمل، مع مراعاة الميل اتجاه المزاريب، حسب الأصول الفنية وتعليمات المهندس المشرف.
2.6.4	Supply and installation of marble thickness of 3 cm to sit,from the Egyptian Silvia ornaments for windows and doors,according to the technical assets and instructions of the supervising engineer.	47	M2			2.6.4	توريد وتركيب رخام سمك 3 سم لزوم الجلسات النوافذ . والأبواب وأعلى الاسوار السعر شامل عمل الحليات من نوع مصري سيلفيا وذلك طبقاً للمقاسات المطلوبة من والأصول الفنية وتعليمات المهندس المشرف.
Sub-Total							
2.7	Metal works					2.7	الأعمال المعدنية والأبواب والشبابيك
2.7.1	Supply and installation of steel protection doors (laser blacksmith) thickness of 4 mm according to the approved sample and price including packaging with Sheets of fiber, hardware, locks, paints and all necessary for the completion of the work accordance to the technical regulations and instructions of the supervising engineer.	6	M2			2.7.1	توريد وتركيب حديد ابواب حماية من الحديد ( حاداه ايزرية ) سمك 4 مم من لزوم الابواب حسب العينة والشكل المعتمد والسعر شامل الدهانات والاقفال والمقابض والخردوات والفاير وكل مايلزم لنهـو العمل وذلك طبقاً للأصول الفنية وتعليمات المهندس المشرف.
2.7.2	Supply and installation of protective iron (laser blacksmithing) thickness of 4 mm for the windows according to the sample and the approved form, the price including frame and paints and all that is necessary to do the work according to the technical principles and instructions of the supervising engineer	4	M2			2.7.2	توريد وتركيب حديد حماية ( حاداه ايزرية ) سمك 4 مم الشبابيك حسب العينة والشكل المعتمد ، والسعر شامل الاطارات والدهانات وكل مايلزم لنهـو العمل حسب الاصول الفنية وتعليمات المهندس المشرف
2.7.3	Supply and installation of P.V.C doors single leaf (white) including locks and hardware from an approved sample to be installed in accordance with the technical regulations and instructions of the supervising engineer.	22	M2			2.7.3	توريد وتركيب ابواب من مادة P.V.C ( أبيض )، من ضلفة واحدة ، من مجاميعه شاملاً الأقفال الحلوق والخردوات من النوع الممتاز وكل مايلزم لنهـو العمل ، طبقاً للأصول الفنية وتعليمات المهندس المشرف .
2.7.4	Supply and installation of P.V.C windows single leaf (white) including locks and hardware from an approved sample to be installed in accordance with the technical regulations and instructions of the supervising engineer.	4	M2			2.7.4	توريد وتركيب شبابيك من مادة P.V.C ( أبيض )، من ضلفة واحدة ، من مجاميعه شاملاً الأقفال الحلوق والخردوات من النوع الممتاز وكل مايلزم لنهـو العمل ، طبقاً للأصول الفنية وتعليمات المهندس المشرف .
2.7.5	Supply and installation of suspended ceiling from aluminium panels (60x60) cm, as approved sample and according to technical specifications and engineer instructions.	62	M2			2.7.5	توريد وتركيب الأسقف معلقة من شرائح الالومنيوم ( 60*60 سم ) للعينة المعتمدة، وفق تعليمات المهندس المشرف.
2.7.6	Supply and installation of guiding signs painted by golden color according to the approved sample.for the room entrances , according to the supervising engineer's instructions.	6	No			2.7.6	توريد وتركيب لوحات الإرشادية المعلقة باللون الذهبي حسب العينة المعتمدة لزوم المداخل الغرف حسب العينة المعتمدة وتعليمات المهندس المشرف .
Sub-Total							
2.8	Water and Sanitation works					2.8	أعمال المياه وتصريف مياه الأمطار
2.8.1	Supply and installation of 1 " P.P.R pipes, including fittings, and all necessary work in accordance with the technical specifications and instructions of the supervising engineer.	60	Lin.m			2.8.1	توريد وتركيب مواسير P.P.R بغطر 1 بوصة شاملاً الوصلات وما يلزم لنهـو العمل طبقاً للأصول الفنية وتعليمات المهندس المشرف.
2.8.2	Supply and installation of 3/4 " P.P.R pipes, including fittings, and all necessary work in accordance with the technical specifications and instructions of the supervising engineer.	25	Lin.m			2.8.2	توريد وتركيب مواسير P.P.R بغطر 3/4 بوصة شاملاً الوصلات وما يلزم لنهـو العمل طبقاً للأصول الفنية وتعليمات المهندس المشرف.
2.8.3	Supply and installation of P.P.R pipes with a diameter of 0.5 inches including the connections and necessary for the completion of work in accordance with the technical specifications and instructions of the supervising engineer.	55	Lin.m			2.8.3	توريد وتركيب مواسير P.P.R بغطر 0.5 بوصة شاملاً الوصلات وما يلزم لنهـو العمل طبقاً للأصول الفنية وتعليمات المهندس المشرف.
2.8.4	Supply and installation of ground siphon of excellent type, including the cover to be of iron coated with chromium and two layers of size not less than 15 × 15 cm, necessary for bathrooms, and all necessary to finish the work as required, according to technical specifications and instructions of the supervising engineer .	14	No			2.8.4	توريد وتركيب سيفون أرضي من النوع الممتاز، شاملاً الغطاء على أن يكون من الحديد المطلي بمادة الكروم ومن طبقتين بمقاس لا يقل عن 15 × 15 سم، لزوم الحمامات ، وكل مايلزم لنهـو العمل بالشكل المطلوب، وذلك طبقاً للأصول الفنية وتعليمات المهندس المشرف.

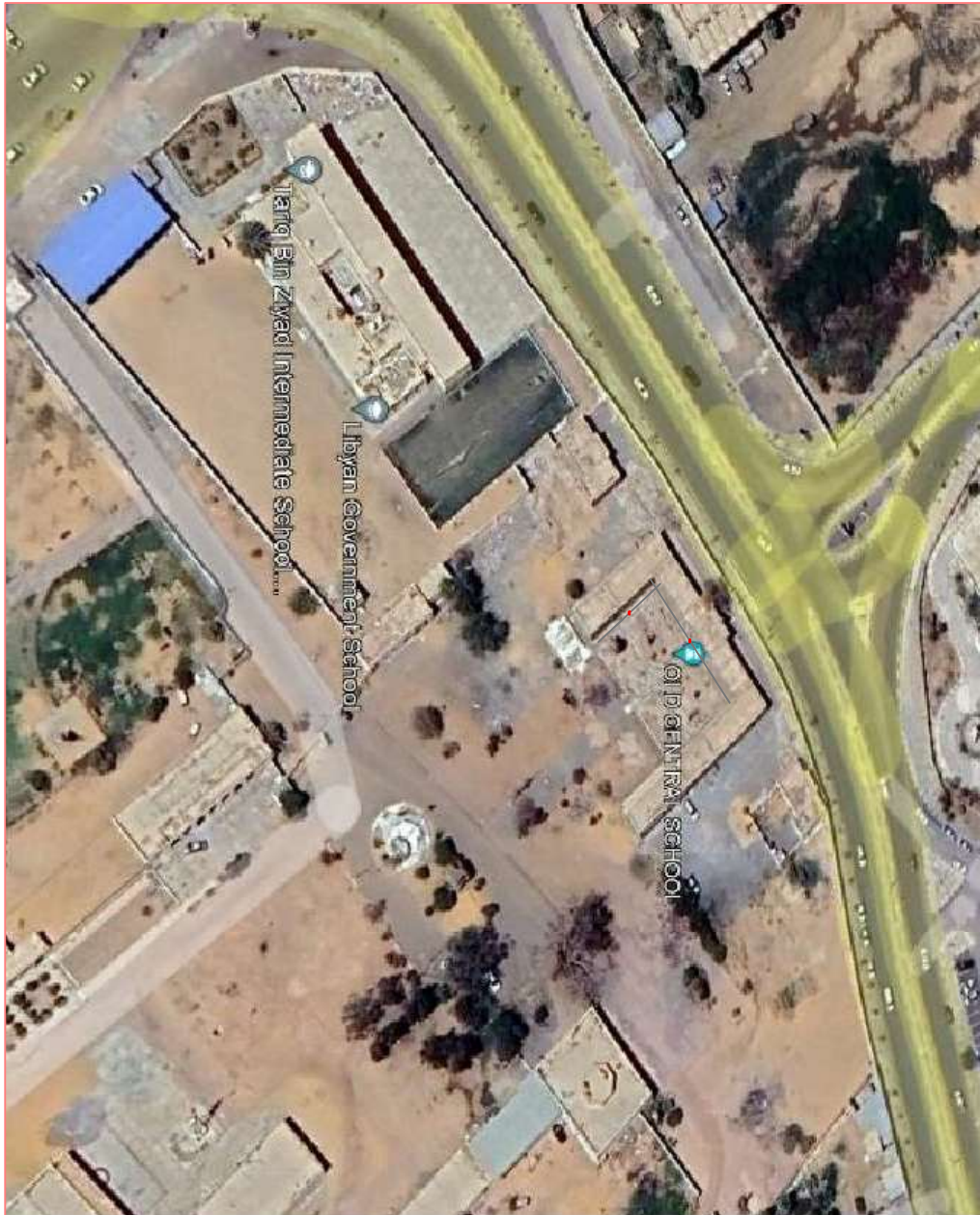
2.8.5	Supply and installation of 1.5-inch P.V.C pipes and pressure of 10 bar, including all necessary for the completion of work, for the need for sewage drainage line, and in accordance with technical specifications and instructions of the supervising engineer .	26	Lin.m			توريد وتركيب مواسير P.V.C قطر 1.5 بوصة وضغط 10 بار، شاملاً كل ما يلزم لنهـو العمل، لزوم خط تصريف مياه المجاري، وطبقاً للأصول الفنية وتعليمات المهندس المشرف.	2.8.5
2.8.6	Supply and installation of pipes made of P.V.C with a diameter of 4 inches and a pressure of 10 bar, for the need to drainage sewage, and the price including the connections and everything necessary for the completion of work, according to technical specifications and instructions of the supervising engineer.	36	Lin.m			توريد وتركيب مواسير مصنوعة من P.V.C وبقطر 4 بوصة وضغط 10 بار، لزوم الصرف وتصريف مياه الأمطار والسعر شامل الوصلات وكل ما يلزم لنهـو العمل وذلك طبقاً للأصول الفنية وتعليمات المهندس المشرف.	2.8.6
2.8.7	Supply and installation of pipes made of P.V.C with a diameter of 6 inches and a pressure of 10 bar, for the need to drainage sewage, and the price including the connections and everything necessary for the completion of work, according to technical specifications and instructions of the supervising engineer.	74	Lin.m			توريد وتركيب مواسير مصنوعة من P.V.C وبقطر 6 بوصة وضغط 10 بار، لزوم تصريف مياه المجاري والسعر شامل الوصلات وكل ما يلزم لنهـو العمل وذلك طبقاً للأصول الفنية وتعليمات المهندس المشرف.	2.8.7
2.8.8	Supply and work of a complete inspection room, measuring 60 × 60 cm, and the evaluation of a depth of 1 meter of cast iron weighing not less than 70 kg, according to the technical specifications and instructions of the supervising engineer.	7	No			توريد وعمل غرفة تفقيش كاملة مجاميعه، بقباس 60×60سم، ويعمل 1 متر شاملاً غطاء، من الزهر لا يقل وزنه عن 70 كجم، وذلك طبقاً للأصول الفنية وتعليمات المهندس المشرف.	2.8.8
2.8.9	Supply and installation of water locking valves for P.P.R pipes with diameters 1/2, 3/4, 1 inch, according to the approved sample, technical procedures and the instructions of the engineer.	24	No			توريد وتركيب محابس لقفـل المياه لمواسير P.P.R بأقطار 1/2، 3/4، 1 بوصة، طبقاً للعيـنة المعتمدة والأصول الفنية وتعليمات المهندس المشرف.	2.8.9
2.8.10	Supply and installation of an Italian electrical water heater with a capacity of at least 80 liters of an excellent type, including switch and connections and what is necessary for the work, according to the approved sample and in accordance with the technical principles and instructions of the supervising engineer.	2	No			توريد وتركيب سخانة مياه كهربائية إيطالية سعة 80 لتر على الأقل من نوع ممتاز، شاملاً المفتاح والتوصيلات ما يلزم لنهـو العمل وذلك حسب العينة المعتمدة وطبقاً للأصول الفنية وتعليمات المهندس المشرف.	2.8.10
2.8.11	Supply and installation of hand wash basins ( hanging), of excellent type complete with siphon, mixer and all necessary for the completion of work, as required, according to the approved sample and in accordance with the technical regulations and instructions of the supervising engineer.	10	No			توريد وتركيب أحواض غسل الأيدي ( المعلقة )، من النـوع الممتاز كاملاً مجاميعه مع السيفون والخلاط وكل ما يلزم لنهـو العمل، بالشكل المطلوب، وذلك حسب العينة المعتمدة وطبقاً للأصول الفنية وتعليمات المهندس المشرف.	2.8.11
2.8.12	Supply and install oriental toilets of excellent type complete with siphon and centrifuge box, with a capacity of at least 10 liters according to the approved sample and according to the technical rules and instructions of the supervising engineer.	8	No			توريد وتركيب مرحاض افريقي من النـوع الممتاز كاملاً مجاميعه مع السيفون وصندوق الطرد، بسعة 10 لتر على الأقل وذلك حسب العينة المعتمدة وطبقاً للأصول الفنية وتعليمات المهندس المشرف.	2.8.12
2.8.13	Supply and install oriental toilets of excellent type complete with siphon and centrifuge box a capacity of at least 10 liters, with stainless steel handle according to the approved sample and according to the technical rules and instructions of the supervising engineer.	2	No			توريد وتركيب مرحاض افريقي من النـوع الممتاز كاملاً مجاميعه مع السيفون وصندوق مع عمل قفايـض من الستالستين وصندوق الطرد، بسعة 10 لتر على الأقل وذلك حسب العينة المعتمدة وطبقاً للأصول الفنية وتعليمات المهندس المشرف.	2.8.13
2.8.14	Supply and installation of an excellent type water tap of brass made of chromium plated copper for bathroom, according to the approved sample and according to the technical rules and instructions of the supervising engineer	10	No			توريد وتركيب شطافة من نوع ممتاز مصنوعة من النحاس المغطى بمادة الكروم، لزوم الحمامات، وذلك حسب العينة المعتمدة وطبقاً للأصول الفنية وتعليمات المهندس المشرف.	2.8.14
2.8.15	Supplying and installing excellent roof drains to drain rainwater. The price includes drainage pipes and everything needed to complete the work in accordance with the technical principles and instructions of the supervising engineer.	2	No			توريد وتركيب جرجوريات بالسـطح من النـوع الممتاز وذلك لتصريف مياه الأمطار والسعر شامل التايـب لتصريف وكل ما يلزم لنهـو العمل طبقاً للأصول الفنية وتعليمات المهندس المشرف.	2.8.15
2.8.16	Supplying and work a waterproofing layer of bitumen material (roll) according to the approved sample for roofs with a thickness of 4 mm, with skirting of no less than 30 cm (without a corresponding premium) accordance to the technical specifications, and the instructions of the supervising engineer.	90	M2			توريد وعمل طبقة عازلة للـرطوبة من مادة البيتومين ( رول ) حسب العينة المعتمدة وذلك للأسطح مسك 4 ملم مع عمل وزيراً مائلة لا تقل عن 15 سم ( بدون علاوة نظير ذلك ) طبقاً للمواصفات الفنية وتعليمات المهندس المشرف.	2.8.16
2.8.17	Supply and installation of a water tank capacity of 3 cubic meters of P.V.C material including mechanical buoy and all necessary for the completion of work in accordance with the technical regulations and instructions of the supervising engineer.	1	No			توريد وتركيب خزان مياه سعة 3 متر مكعب من مادة P.V.C شاملاً العوامة ميكانيكية وكل ما يلزم لنهـو العمل طبقاً للأصول الفنية وتعليمات المهندس المشرف.	2.8.17
2.8.18	Supply and installing mirrors for toilets, and installation accordance to the technical principles and instructions of the supervising engineer	5	M2			توريد وتركيب مرايا لزوم دورات المياه وتركيب طبقاً للأصول الفنية وتعليمات المهندس المشرف.	2.8.18
Sub-Total							
2.9	Electrical works						2.9 الأعمال الكهربائية
2.9.1	Supply and laying copper electrical wires section 6mm2 insulated PVC PV 750 volts according to international specifications with the removal of old and assembled on site, accordance with technical regulations and instructions of the supervising engineer.	100	Lin.m			توريد ومد أسلاك كهربائية نحاسية مقطعه 6 مم2 شعيرة مرنة معزولة بمادة بي.في.سي 750 فولت حسب المواصفات العالمية والمد بواسطة مواسير بي.في.سي مدفونة داخل الحوائط وذلك طبقاً للأصول الفنية وتعليمات المهندس المشرف.	2.9.1
2.9.2	Supply and laying copper electrical wires section 4mm2 insulated PVC PV 750 volts according to international specifications with the removal of old and assembled on site, accordance with technical regulations and instructions of the supervising engineer.	250	Lin.m			توريد ومد أسلاك كهربائية نحاسية مقطعه 4 مم2 شعيرة مرنة معزولة بمادة بي.في.سي 750 فولت حسب المواصفات العالمية والمد بواسطة مواسير بي.في.سي مدفونة داخل الحوائط وذلك طبقاً للأصول الفنية وتعليمات المهندس المشرف.	2.9.2
2.9.3	Supply and installation of external wall lighting lantern first class of certified sample with LED 40 WATT and the price including everything necessary to complete the work in accordance with technical specifications and instructions of the supervising engineer	8	No			توريد وتركيب فانوس أضاءة حائطي خارجي درجة أولى من عينة معتمدة ليد 40 وات و السعر شامل التوصيلات وكل ما يلزم لنهـو العمل طبقاً للأصول الفنية وتعليمات المهندس المشرف.	2.9.3
2.9.4	Supply and installation of LED lighting fixture (60 * 60 cm) of original European quality, according to the approved sample, and installed on the suspended ceiling according to the technical specifications and instructions of the supervising engineer.	12	No			توريد وتركيب قاعدة إنارة (60*60 سم ) LED من نوعية أوروبية أصيلة وذلك حسب العينة المعتمدة وتركيب على السقف المعلق طبقاً للأصول الفنية وتعليمات المهندس المشرف.	2.9.4

2.9.5	Supply and installation of original single internal switch first grade 16 amp to control the lighting units and the price including the installation of a power box P.V.C first class and everything necessary to work .	3	No			توريد و تركيب مفتاح كهرباء داخلي فردي أصلي درجة أولى 16 أمبير لتحكم في وحدات الإضاءة و السعر شامل تركيب علية كهرباء P.V.C درجة أولى و كل ما يلزم لنهو العمل .	2.9.5
2.9.6	Supply and installation of double electrical socket outlet first class 16 amp including land Price including installation of a power box P.V.C first class and everything necessary to work .	6	No			توريد وتركيب مخرج كهربائي زوحي أصلي درجة أولى 16 أمبير شاملاً الأرضي السعر شامل تركيب علية كهرباء P.V.C درجة أولى و كل ما يلزم لنهو العمل .	2.9.6
2.9.7	Supply and installation of a lighting circuit with a single switch including the extension of individual copper wires flexible insulated PVC PVC inside strong plastic pipes and buried inside the walls for three exits according to the technical principles and instructions of the supervising engineer .	2	No			توريد وتركيب دائرة إضاءة مع مفتاح فردي شاملاً مد الأسلاك الفردية نحاسية مرنة معزولة بال بي.بي.سي داخل مواسير بلاستيكية قوية ومدفونة داخل الحوائط وذلك لثلاث مخارج طبقاً للاصول الفنية وتعليمات المهندس المشرف	2.9.7
2.9.8	Supply and installation of a metal main electrical distribution panel to connect the headlamp with a main switch four poles 100 amp Italian and the price includes the switches for connecting the headlamp.	1	No			توريد و تركيب لوحة توزيع كهرباء رئيسية معدنية مع مفتاح رئيسي تفاضلي أربعة أقطاب 100 أمبير إيطالي الصنع و السعر شامل المفاتيح لزوم التغذية.	2.9.8
	Sub-Total						
	Total COST in USD						

	Total Cost for PROJECT in USD		
--	-------------------------------	--	--



## ANNEX B



International Organization For Migration

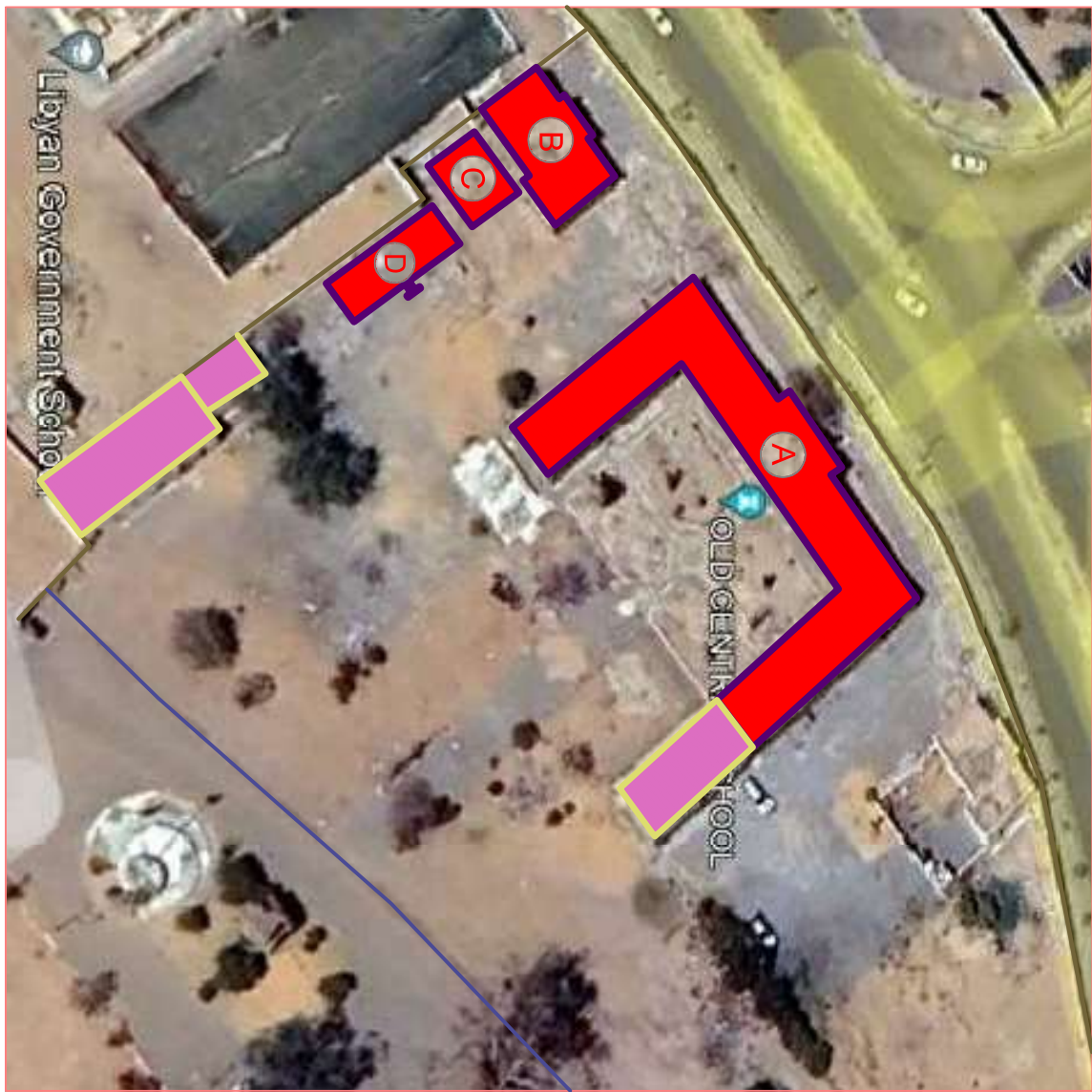
Rehabilitation of TVET center  
in Sabha

Date: 28/08/2023

General site

PLAN NUMBER : ( 1 )

ROOF AREA : // m<sup>2</sup>



Symbol	Description
	Training Hall Building
	Administrative Building
	Agricultural Equipment Store
	WCS Building
	Existing Buildings



International Organization For Migration

Rehabilitation of TVET center  
in Sabha

Date: 28/08/2023

General site

PLAN NUMBER : ( 2 )

ROOF AREA : // m<sup>2</sup>



## International Organization For Migration

Rehabilitation of TVET center in Sabha

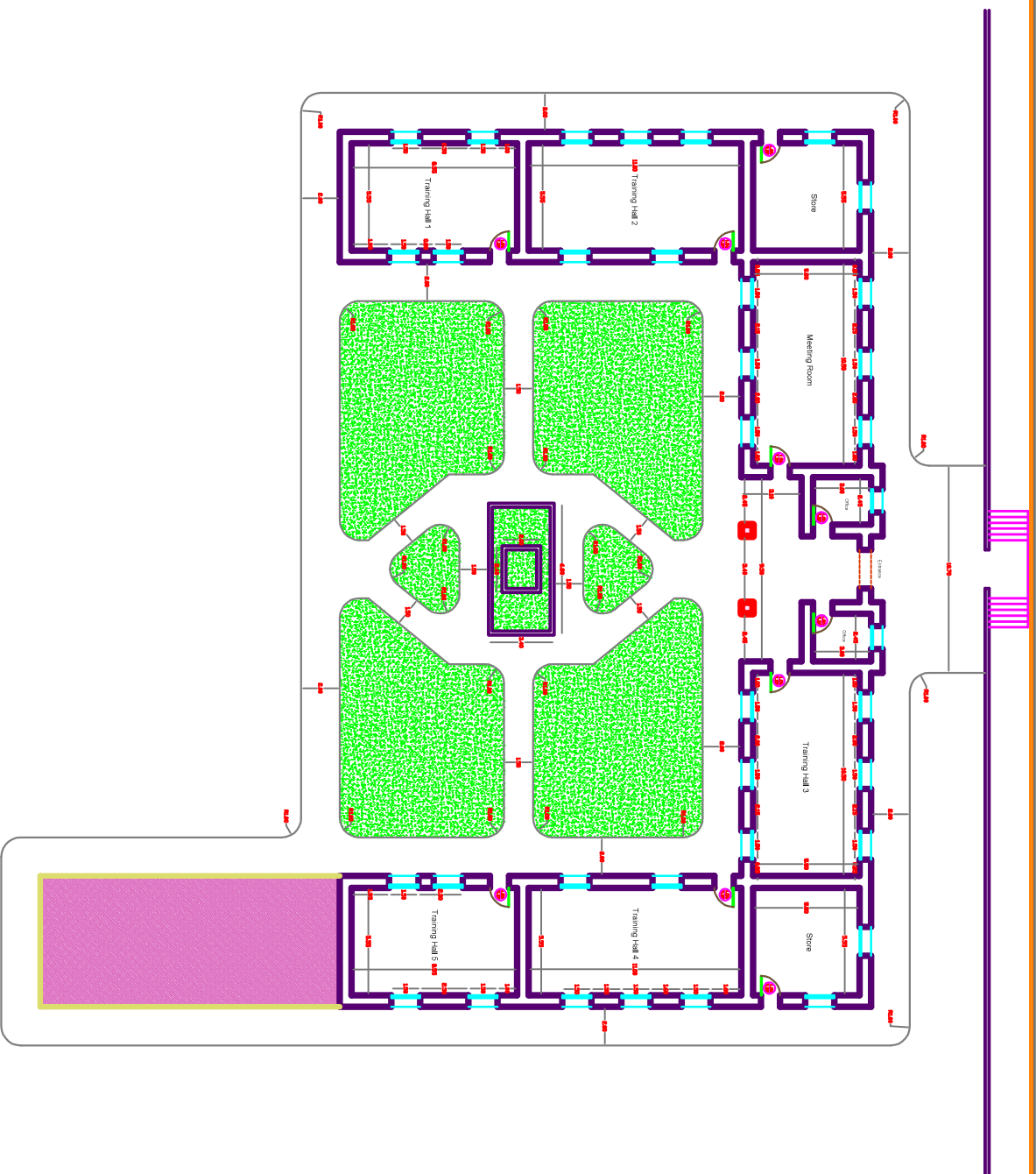
Date: 28/08/2023

PLAN NUMBER : ( 3 )

Ground Plan Floor

ROOF AREA : 600 m<sup>2</sup>

A





## International Organization For Migration

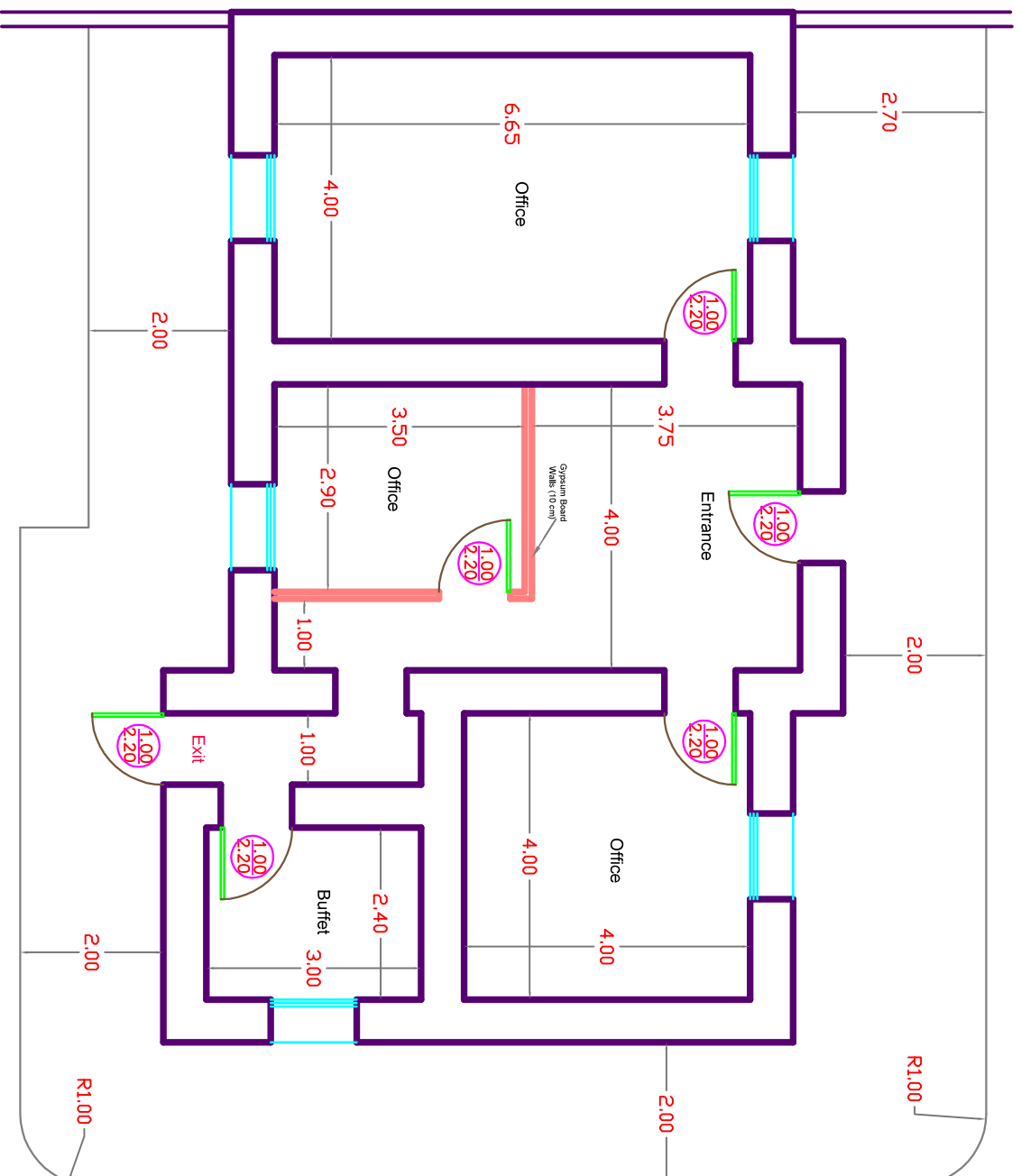
## Ground Plan Floor

ROOF AREA : 125 m2

## Rehabilitation of TVET center in Sabha

Date: 28/08/2023

PLAN NUMBER : ( 4 )





## International Organization For Migration

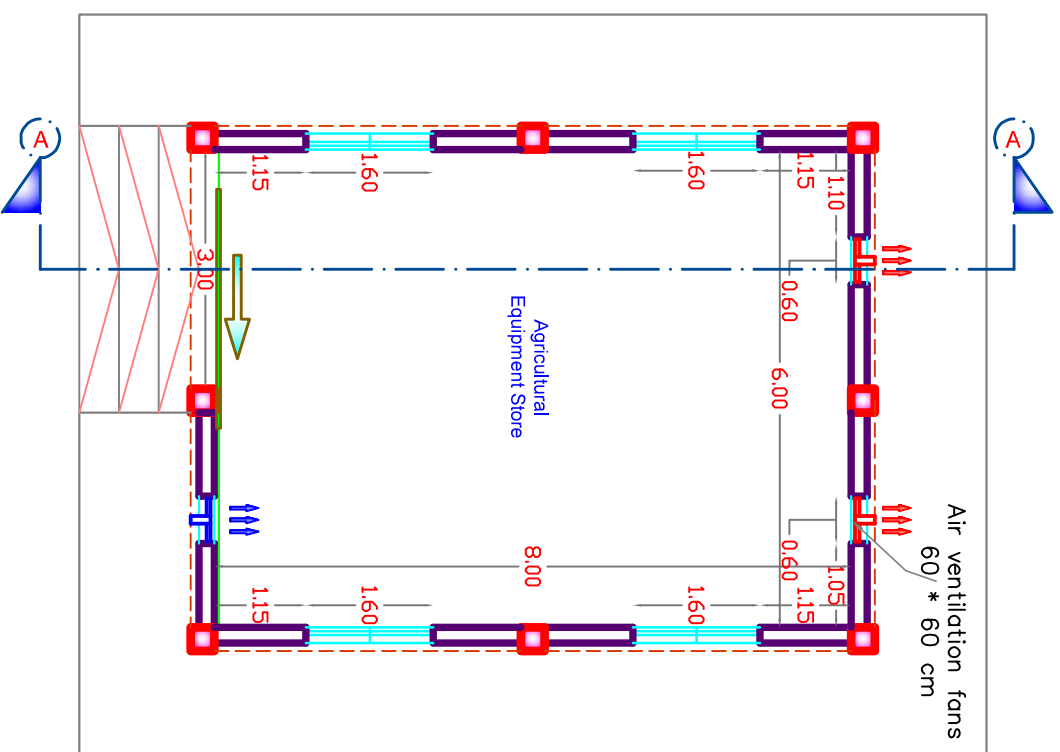
## Rehabilitation of TVET center in Sabha

Date: 28/08/2023

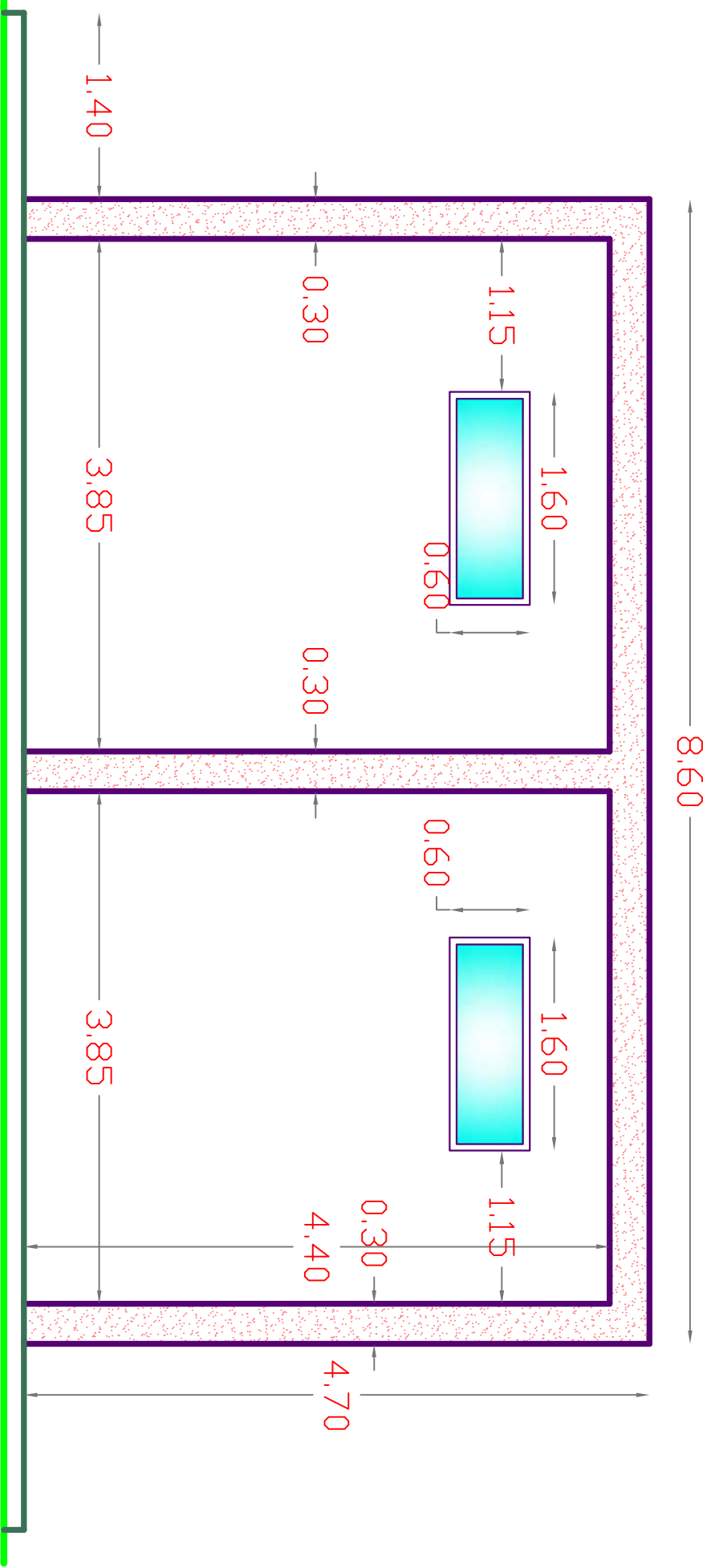
PLAN NUMBER : (5)

## Ground Plan Floor

ROOF AREA : 58 m2







International Organization For Migration

The Left View

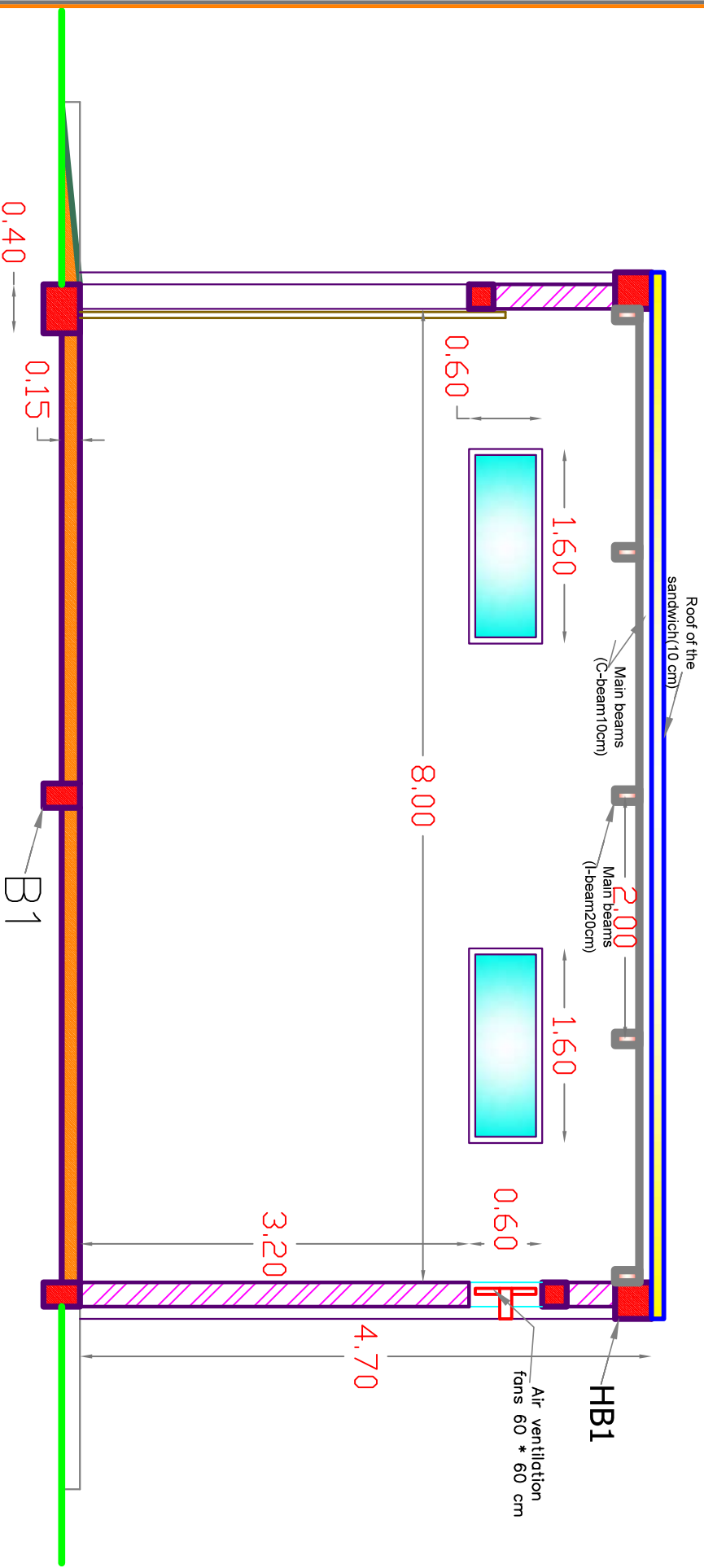
ROOF AREA : 58 m<sup>2</sup>

Rehabilitation of TVET center  
in Sabha

Date: 28/08/2023

PLAN NUMBER : ( 7 )

C



International Organization For Migration

Section ( A - A )

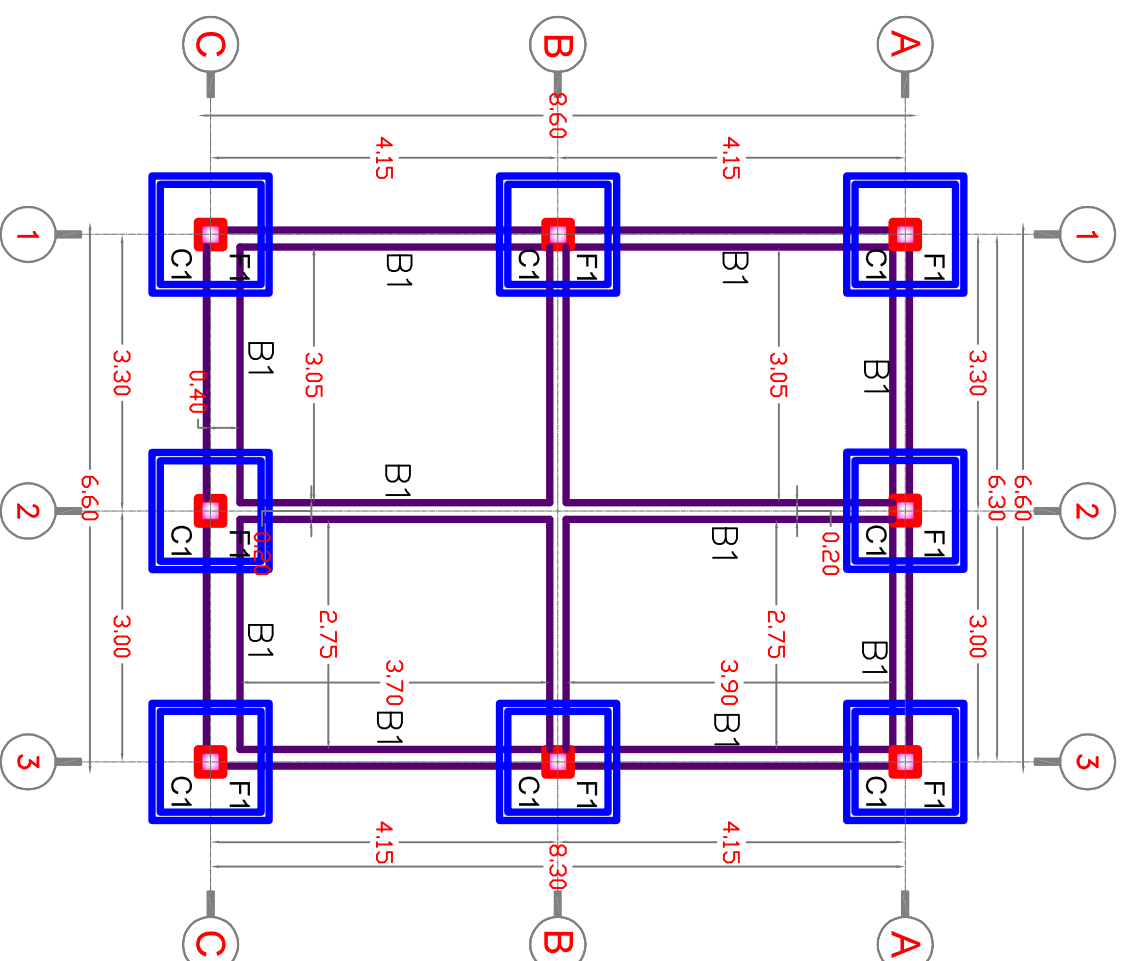
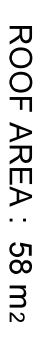
ROOF AREA : 58 m<sup>2</sup>

Rehabilitation of TVET center  
in Sabha

Date: 28/08/2023

PLAN NUMBER : ( 8 )

C





# International Organization For Migration

Rehabilitation of TVET center  
in Sabha

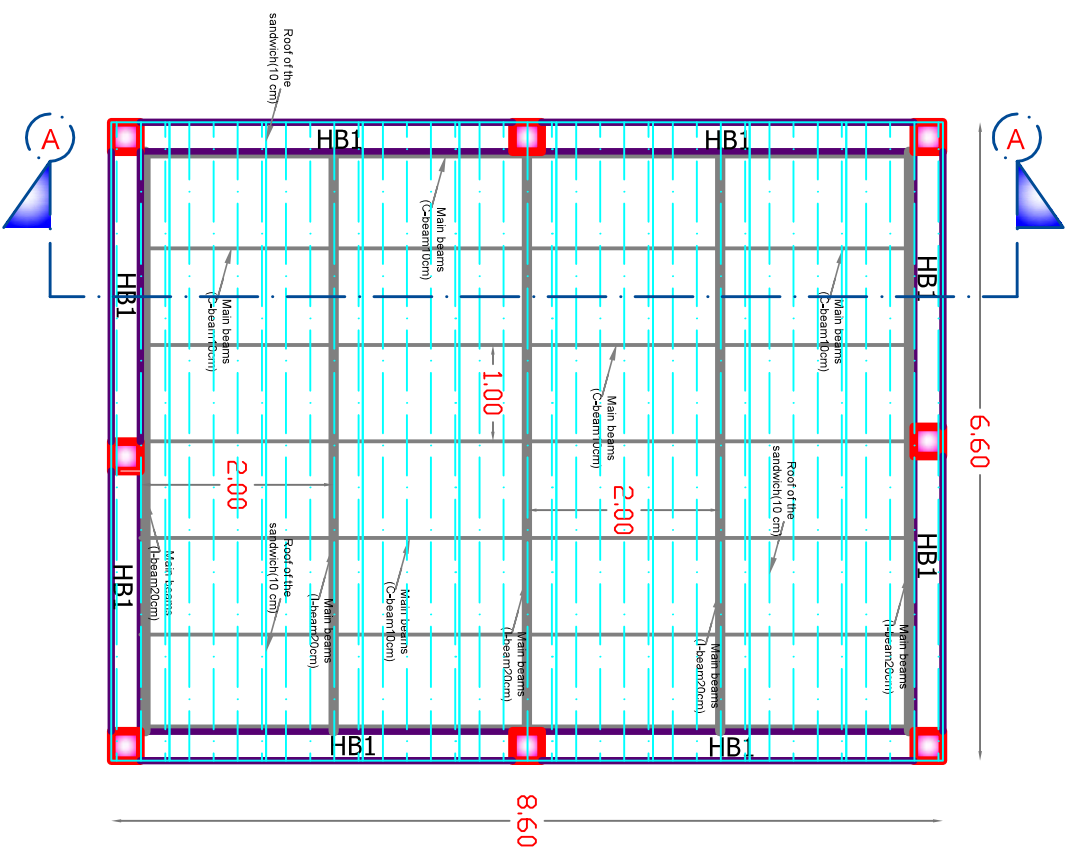
Date: 28/08/2023

PLAN NUMBER : ( 10 )

Reinforced concrete for  
roof of ground floor

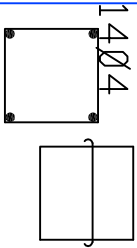
ROOF AREA : 58 m<sup>2</sup>

C



# Tie-column schedule


Detailed	Sec Dimensions		Mark
	L	W	
$\phi 6/15\text{cm}$	0,30	0,30	C1



# Footing Reinforcement Schedule

النسليج الازخامين	أبعاد القاعدة المستطيلة			أبعاد القاعدة المربعة			المرز
	H	W	L	H	W	L	
$\phi 14/15\text{cm}$	0.40	1.20	1.20	10	1.40	1.40	F1

# Tie-beam schedule

Detailed		Longitudinal reinforcement				Sec dimensions		Mark
	Strutps	Top	Extra		Bottom	Height	Width	
			End span	Mid span				
	ø6/15cm	12Ø2	—	—	14Ø2	0.30	0.20	B1

# Roof slab reinforcement schedule

الملاحظات	Detailed	Strutps	النسليج الطولي				أبعاد المقطع		المرز
			Top	مطابق مع الأبعاد		Bottom	Height	Width	
				End span	Mid span				
		15 سم	1403	—	—	1404	0.30	0.30	HB1



International Organization For Migration

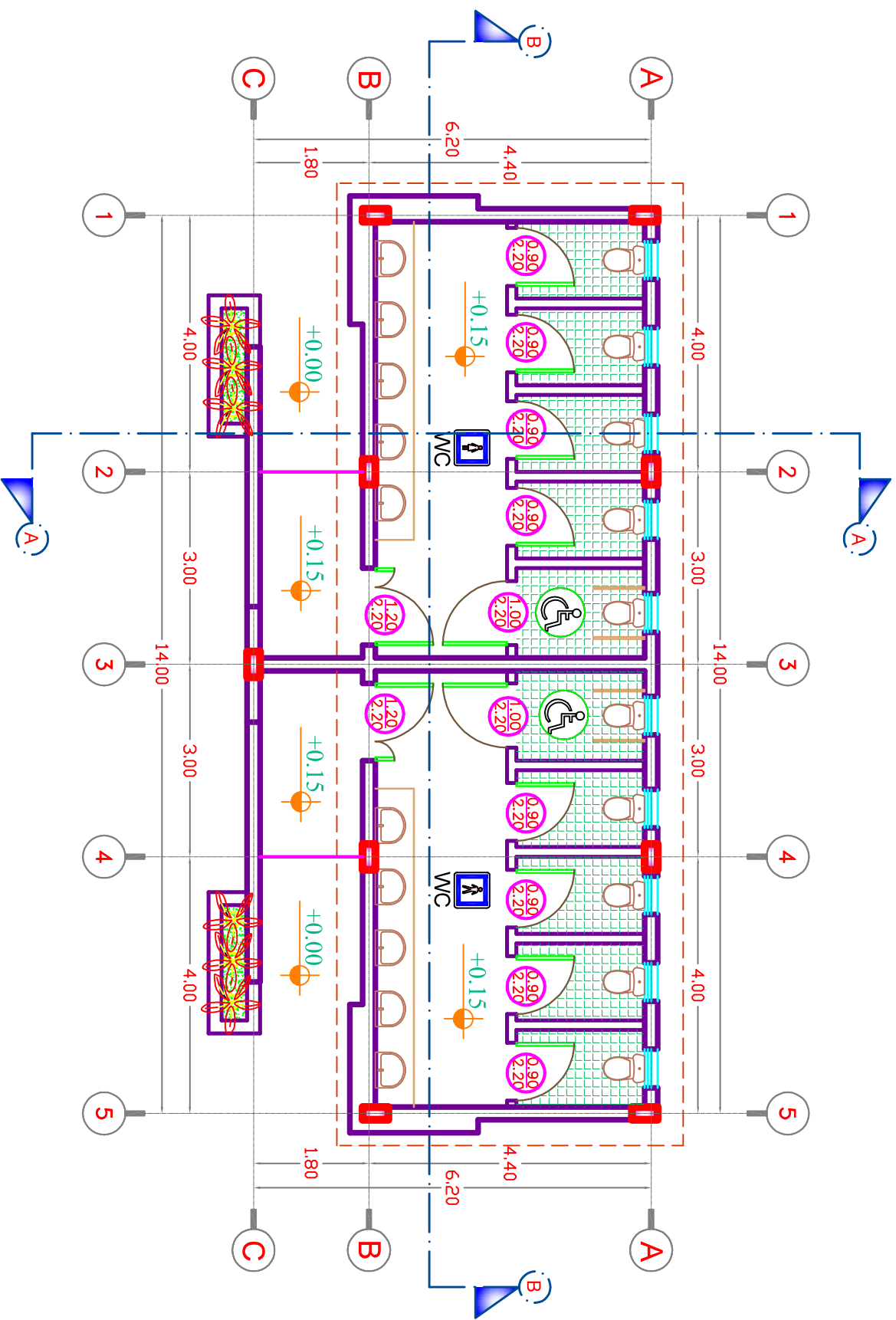
Reinforcement Table

ROOF AREA : 58 m2

Rehabilitation of TVET center  
in Sabha

Date: 08/08/2023

PLAN NUMBER : ( 11 )



International Organization For Migration

Ground Floor Plan

ROOF AREA : 84 m<sup>2</sup>

Rehabilitation of TVET center  
in Sabha

Date: 28/08/2023

PLAN NUMBER : ( 12 )

D



# International Organization For Migration

Ground Floor Plan

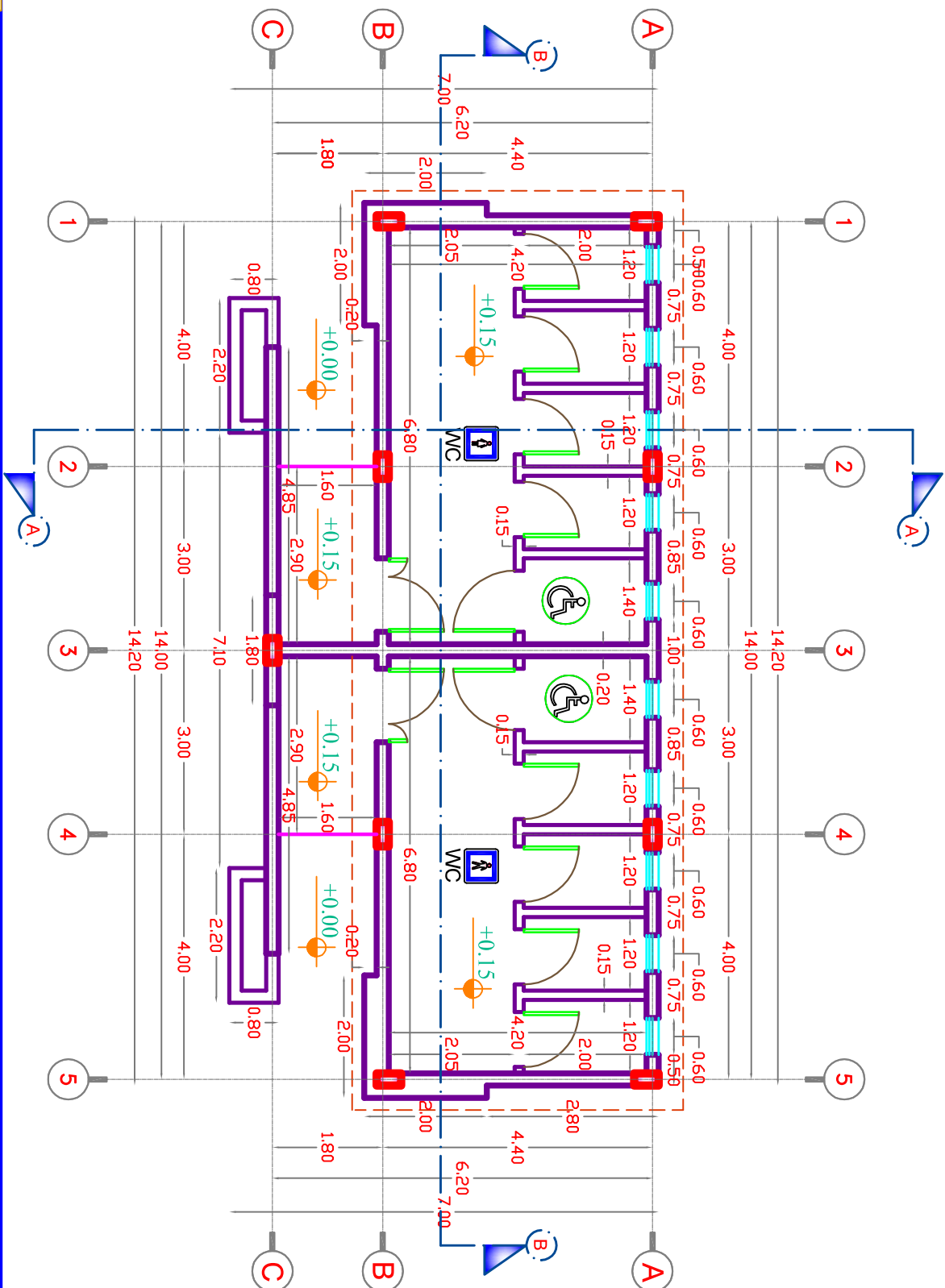
ROOF AREA : 84 m<sup>2</sup>

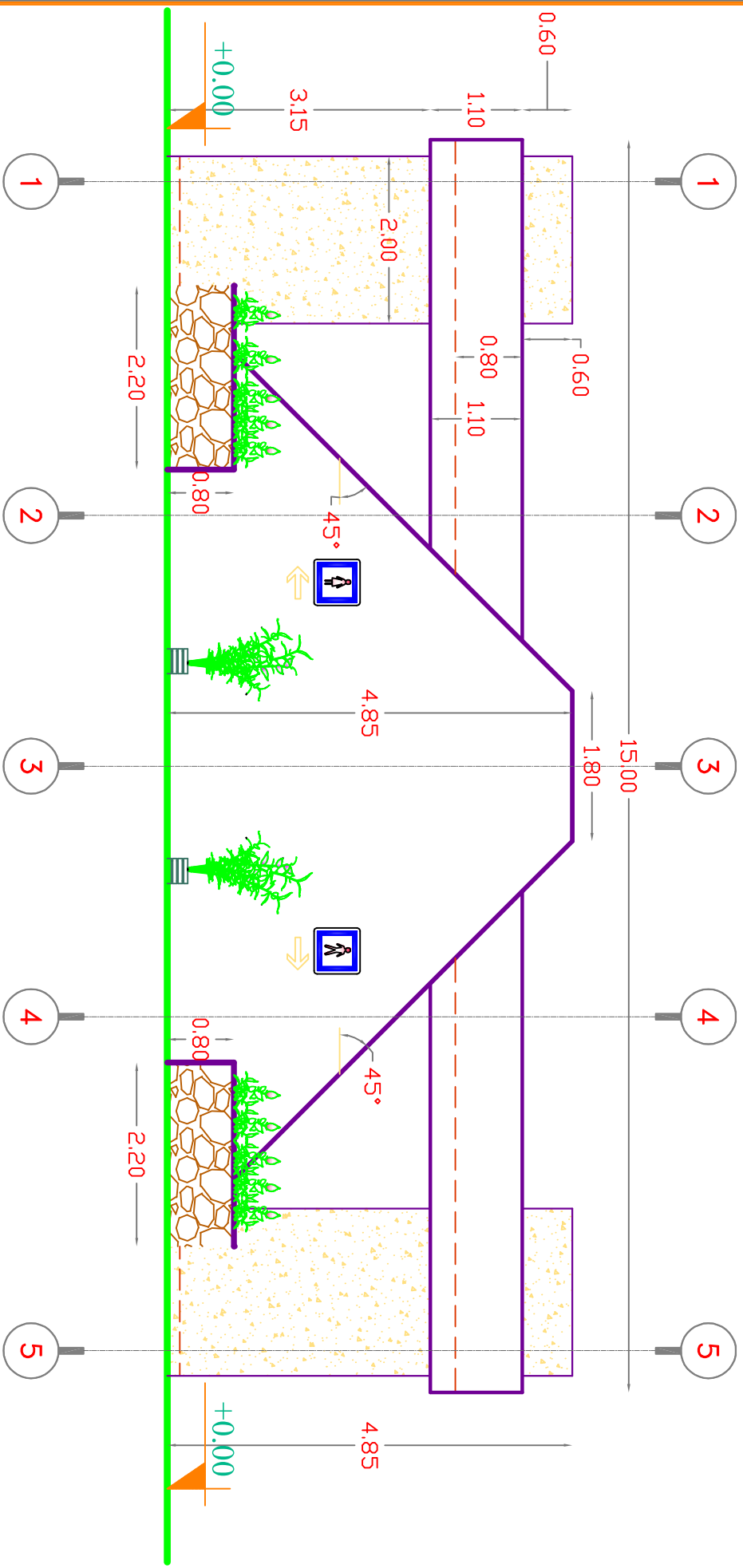
Rehabilitation of TVET center  
in Sabha

Date: 28/08/2023

PLAN NUMBER : ( 13 )

D





International Organization For Migration

The Front View

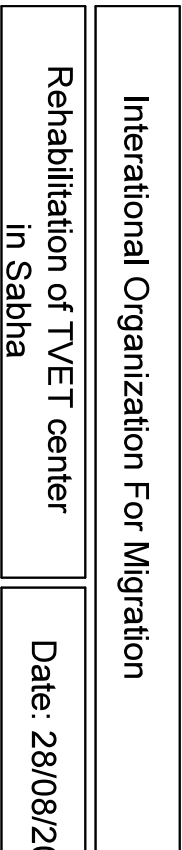
ROOF AREA : 84 m<sup>2</sup>

Rehabilitation of TVET center  
in Sabha

Date: 28/08/2023

PLAN NUMBER : ( 14 )

D



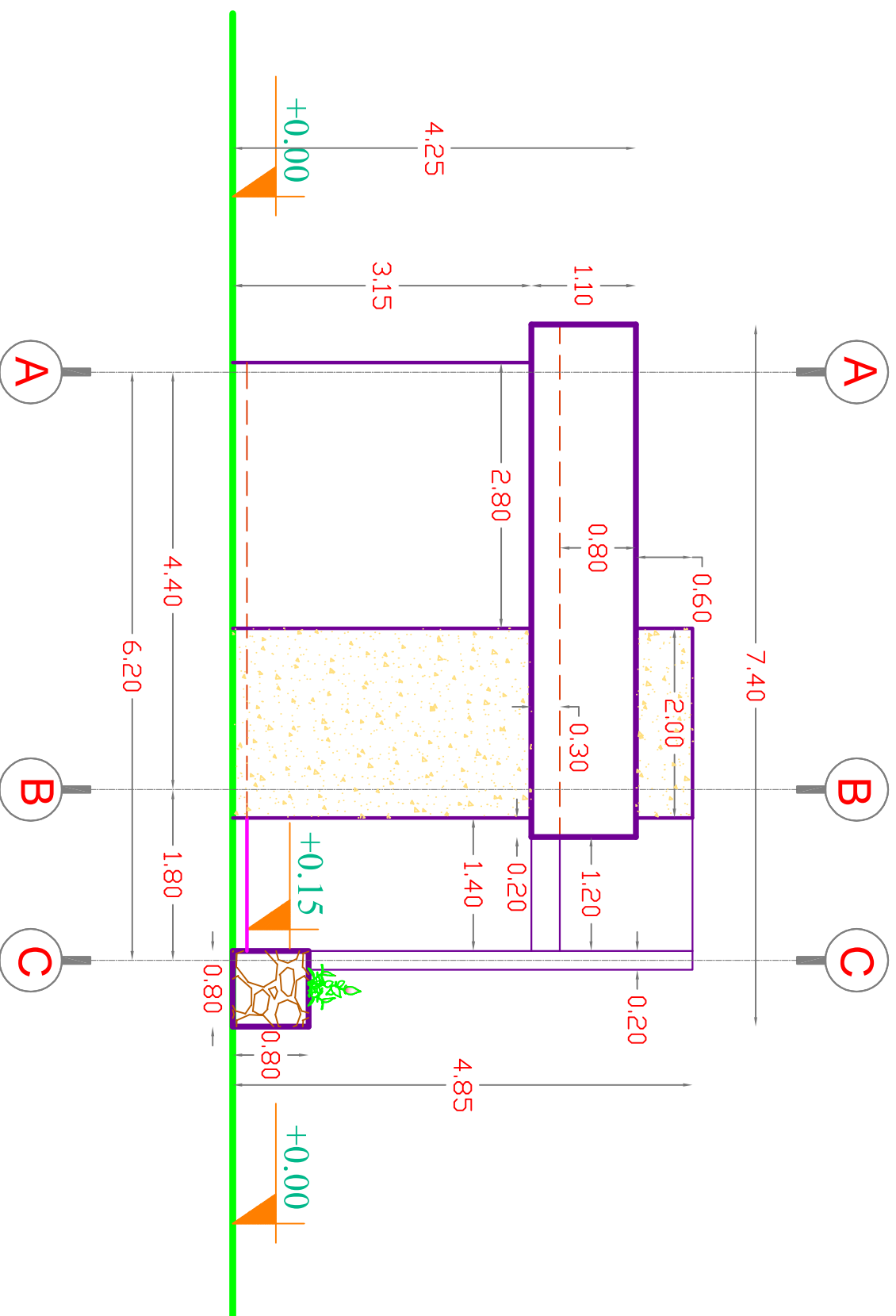
## The Left View

ROOF AREA : 84 m<sup>2</sup>

Date: 28/08/2023

PLAN NUMBER : ( 15 )

A diagram of a vertical rectangle with a black border. Inside the rectangle, centered horizontally and vertically, is a red capital letter 'D' enclosed within a thin black circle.







## International Organization For Migration

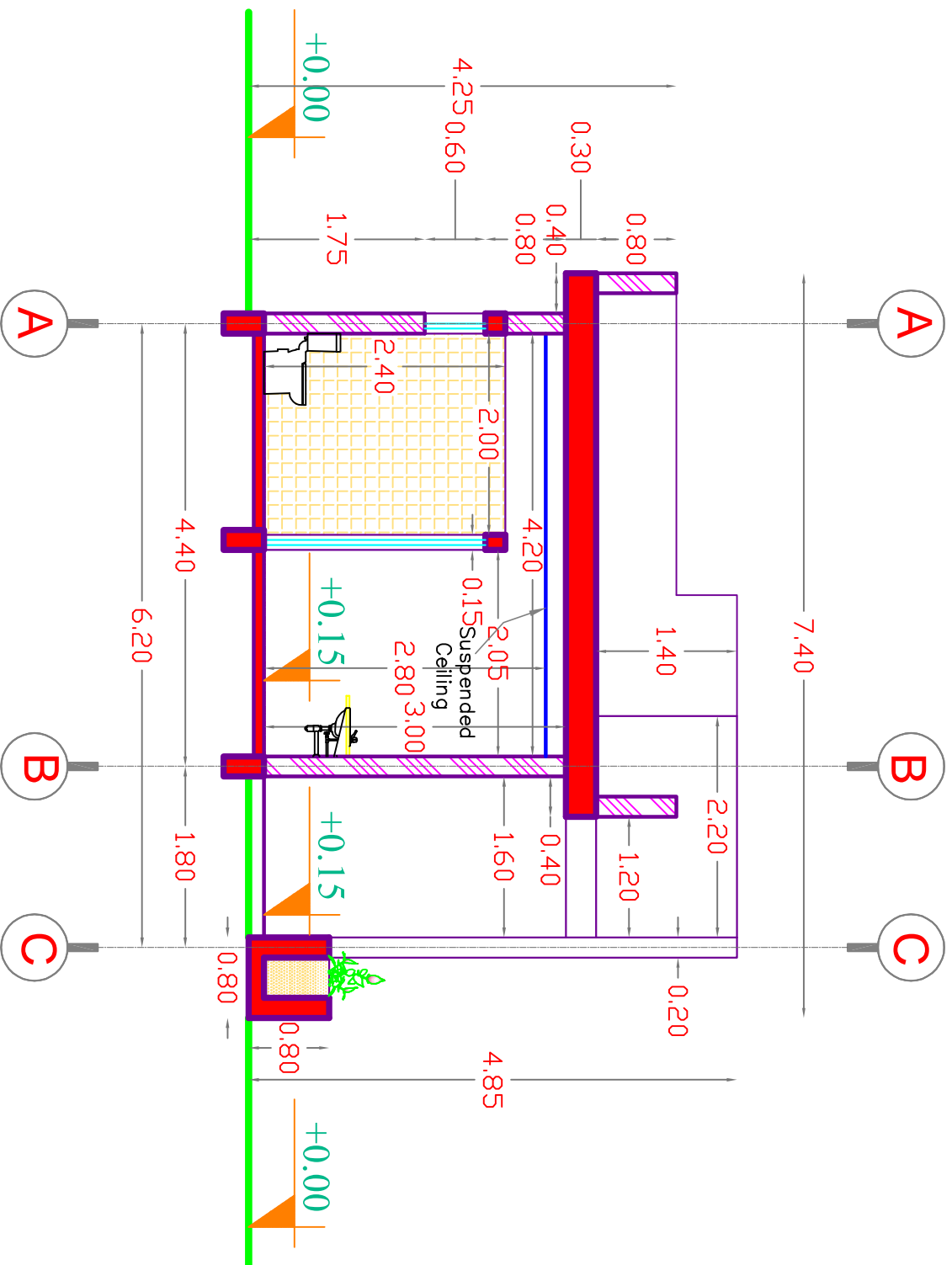
## Section ( A - A )

ROOF AREA : 84 m<sup>2</sup>

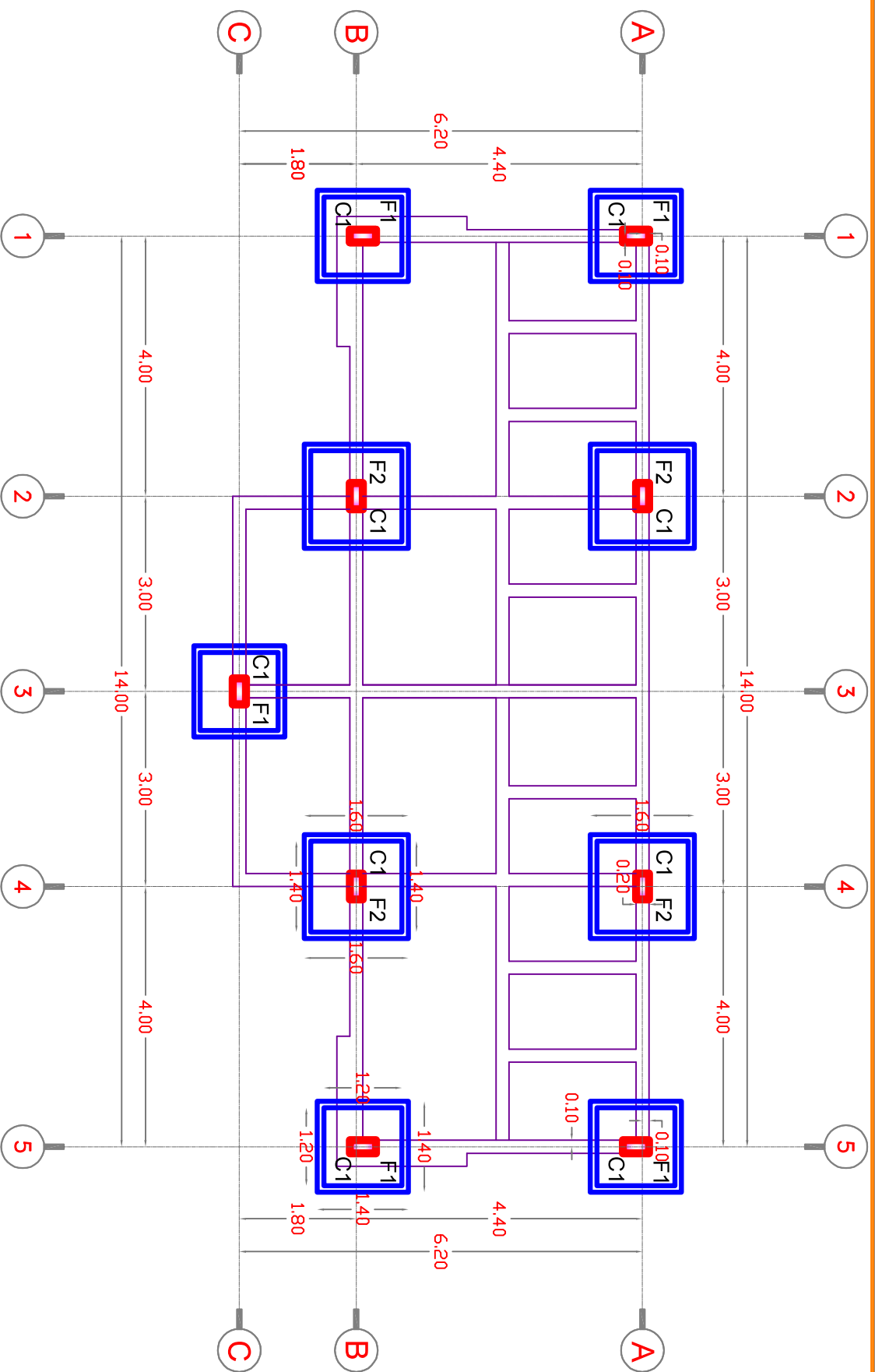
## Rehabilitation of TVET center in Sabha

Date: 28/08/2023

PLAN NUMBER : ( 17 )







International Organization For Migration

Chart for straight  
column axes

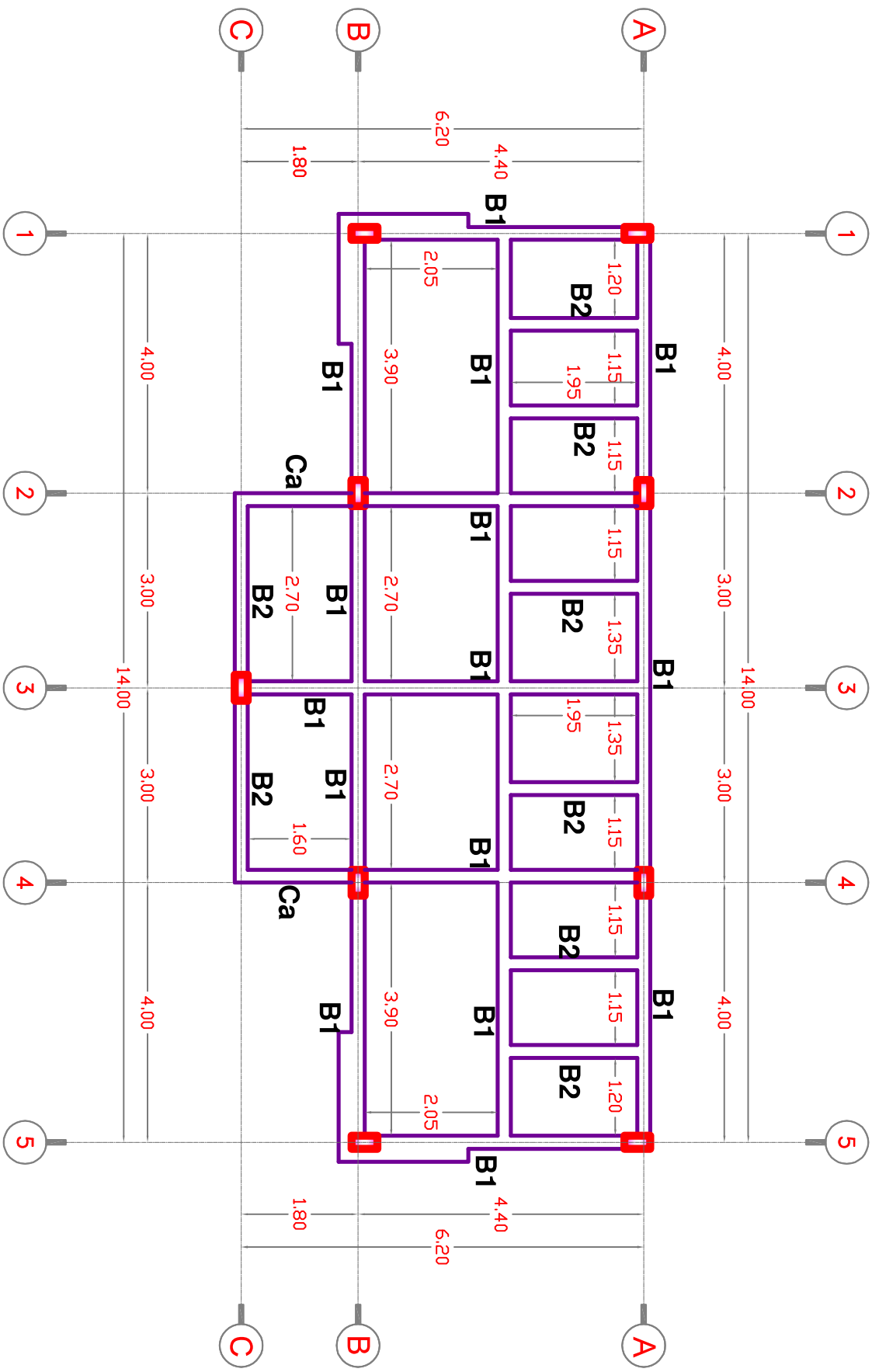
ROOF AREA : 84 m²

Rehabilitation of TVET center  
in Sabha

Date: 28/08/2023

PLAN NUMBER : ( 19 )

D



International Organization For Migration

Chart for straight  
column axes

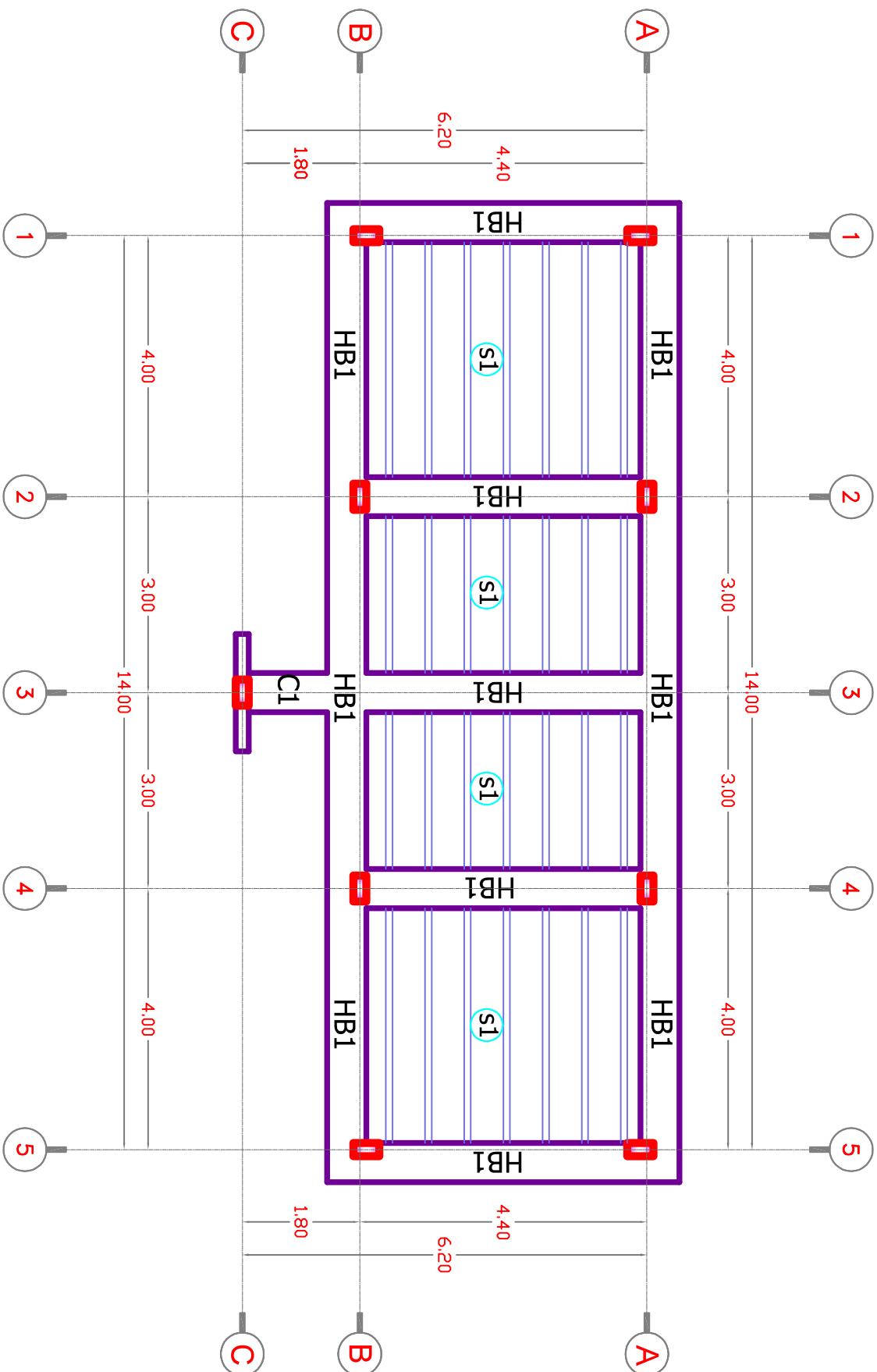
ROOF AREA : 84 m²

Rehabilitation of TVET center  
in Sabha

Date: 28/08/2023

PLAN NUMBER : ( 20 )

D



International Organization For Migration

Reinforced concrete for  
roof of ground floor

ROOF AREA : 84 m<sup>2</sup>



Rehabilitation of TVET center  
in Sabha

Date: 28/08/2023

PLAN NUMBER : ( 21 )

D


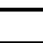

## Columns Reinforcement Schedule

الرمز	أبعاد المقطع		1406	
	العرض	الطول		
C1	0,20	0,40		06



جدول تسليح القواعد  
Footing Reinforcement Schedule

الارتفاع	إبعاد القاعدة المستطيلة		إبعاد القاعدة المثلثية		الوزن
	عرض	طول	عرض	طول	
114/15cm	0.40	1.20	10	1.40	F1
114/15cm	0.40	1.40	10	1.60	F2

## Tie-beam schedule

Tie-beam schedule									
Detailed		Strutups	Longitudinal reinforcement				Sec dimensions		Remarks
			Top	Extra		Bottom	Height	Width	
				End span	Mid span				
		ø6/15cm	14Ø3	—	—	14Ø3	0.40	0.20	B1
		ø6/15cm	12Ø2	—	—	14Ø2	0.40	0.20	B2
		ø6/15cm	14Ø4	—	—	—	0.40	0.20	Cc

## Roof slab reinforcement schedule

الملاحظات	شكل المقطع	التمساح العرضي	التمساح الطولي			ابعاد المقطع		متر	
			علوي	حطاب عند القمة		الارتفاع	العرض		
				من طرف	في المنتصف				
عدد الجدر وساقى الإمتداد كل 15 سم		60 كل 15 سم	1404	1402	—	1405	0.27	0.60	HE
Cantilever - كابولي		60 كل 15 سم	—	—	—	—	—	—	c1
Ribs - الأعصاب		60 كل 20 سم	1201	—	—	1202	0.27	0.15	S

## International Organization For Migration

## Reinforcement schedules

ROOF AREA : 84 m<sup>2</sup>

## Rehabilitation of TVET center in Sabha

Date: 28/08/2023

PLAN NUMBER: (22)

